

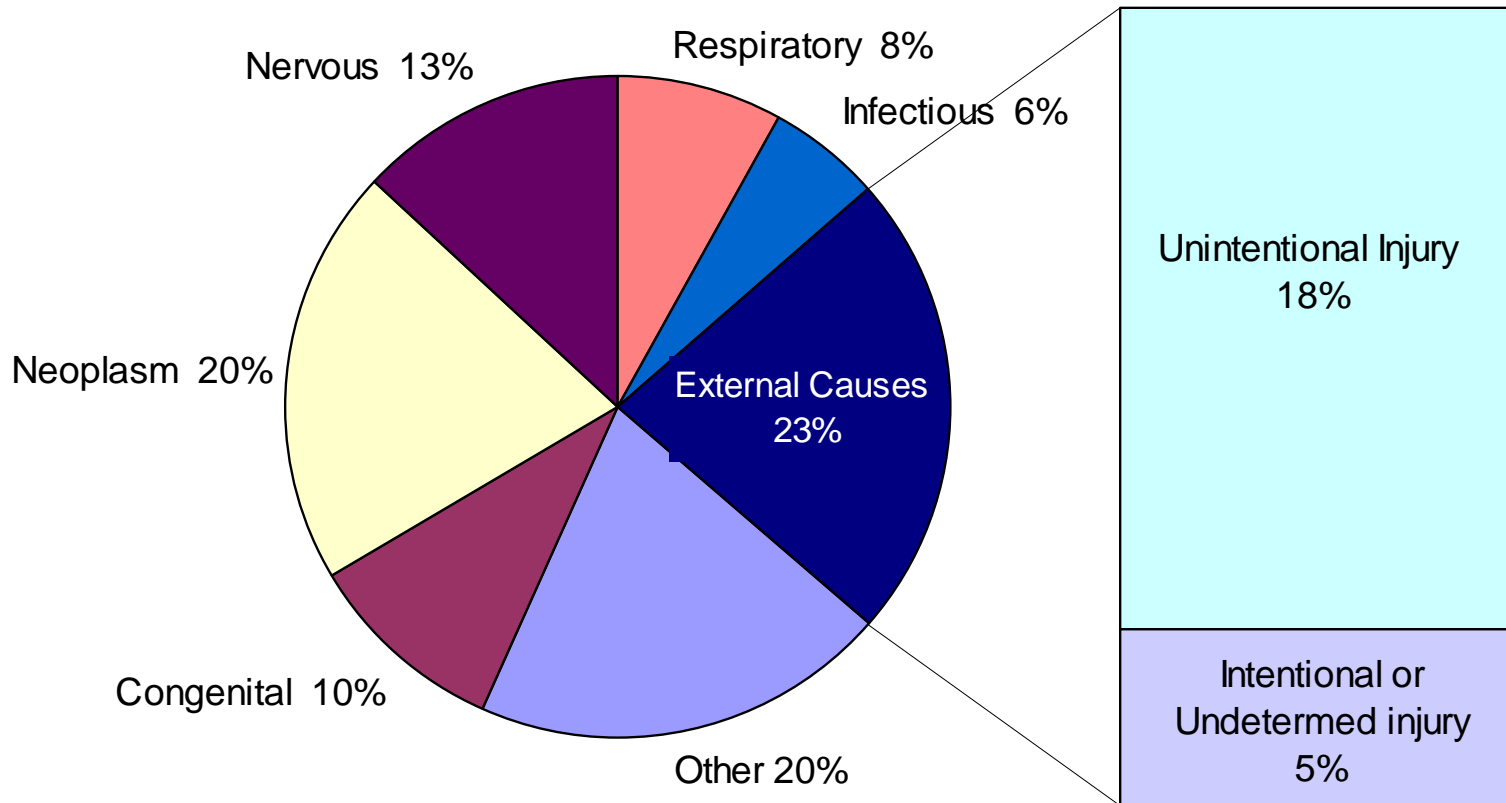
Child accidents

KHD 2006

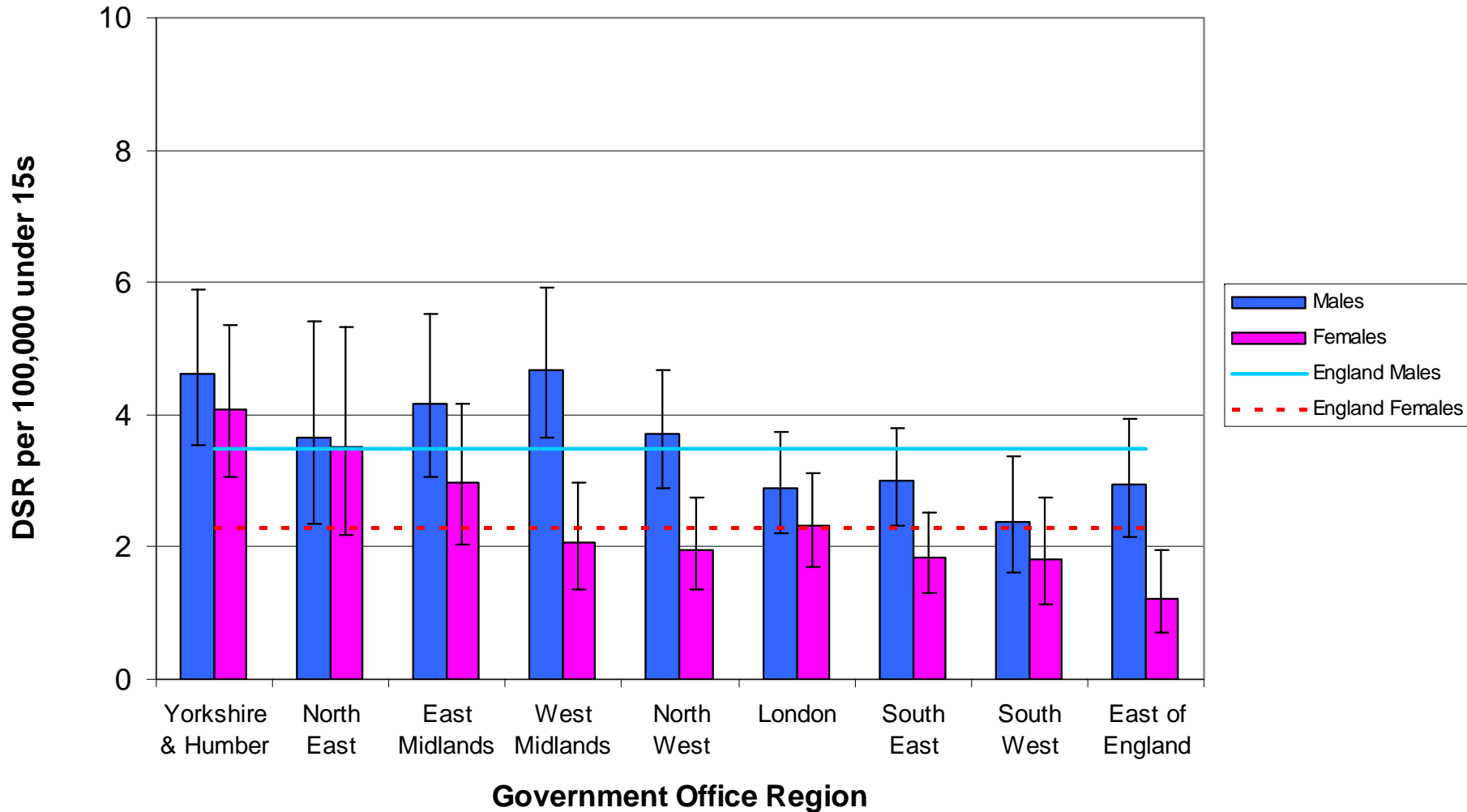
Definitions

- **Accidental injuries** = ICD10 codes
 - Diagnosis codes = S00 – T98 (injury & poisoning)
 - External Cause codes = V01 – X59
- **Age** = under 15
- **Geography** = West Midlands Region
- **Data Source** – death data = ONS
 - Admission data = HES data
 - A&E data = data from University of Bham

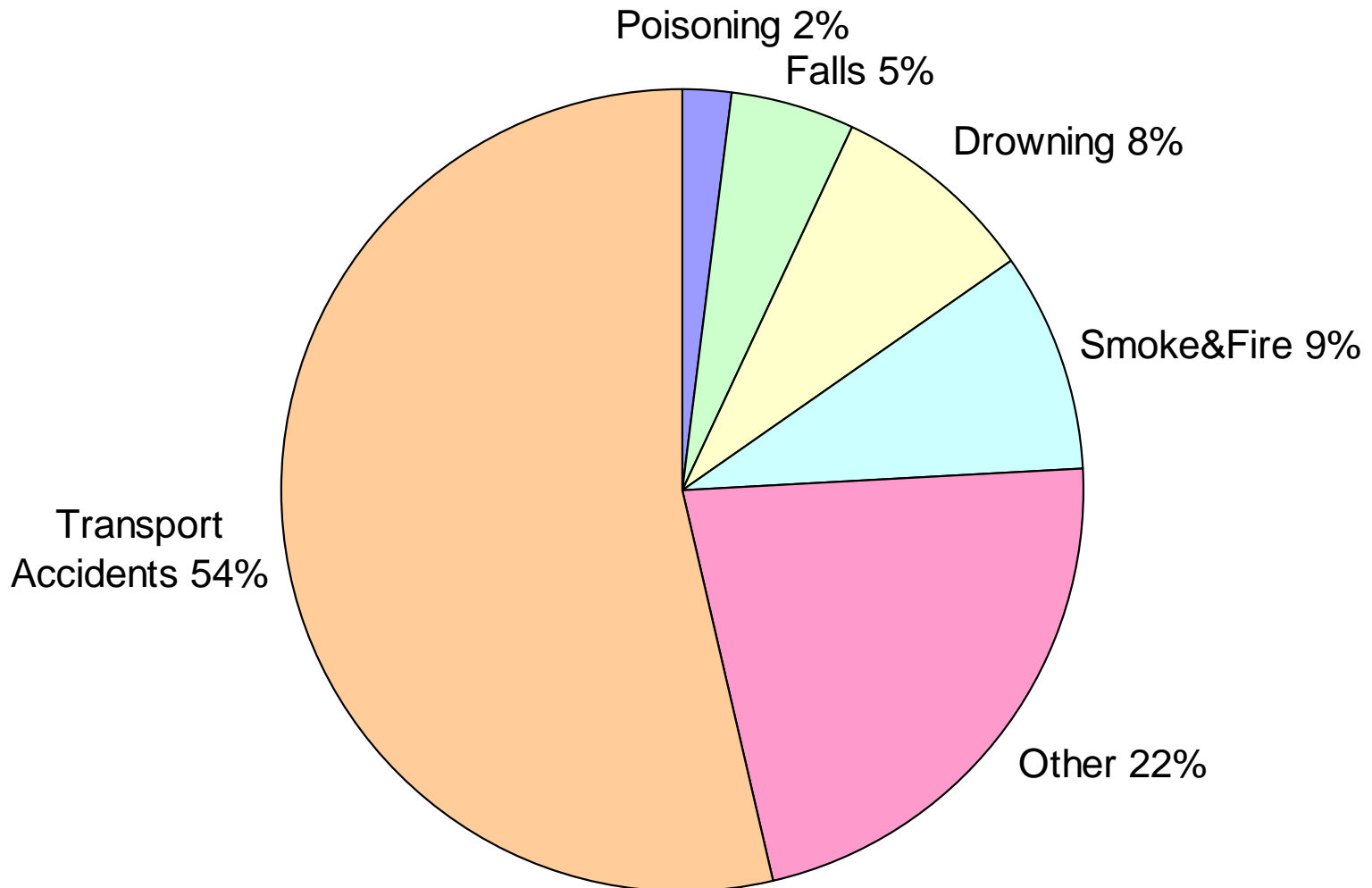
Major causes of death, England, age 1 to 14, 2002-4



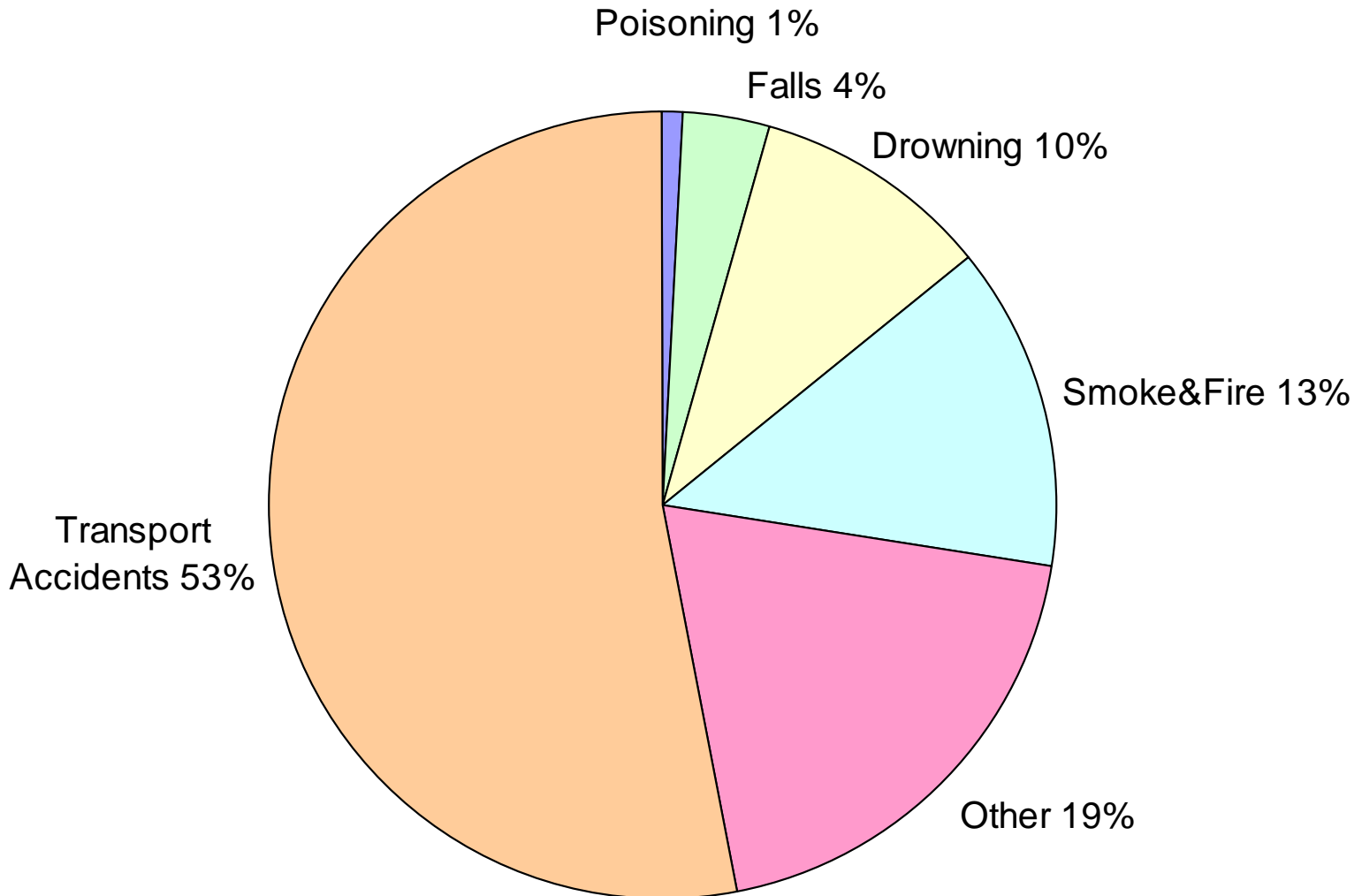
DSRs for Accidental Deaths by GO Region Age under15, 2002-2004



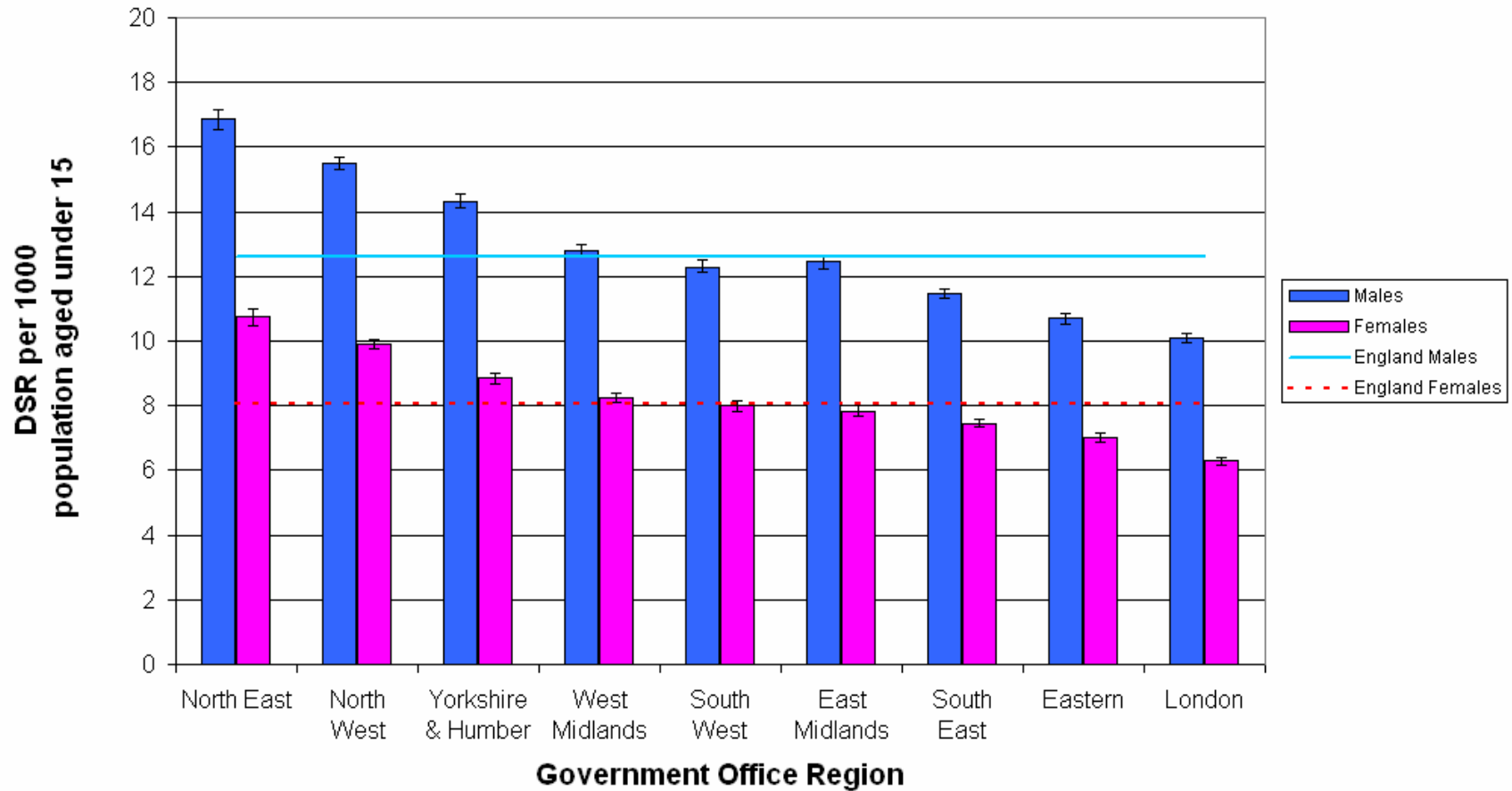
Main Causes of Accidental Death WM (1995-2004) Males Aged 1-14



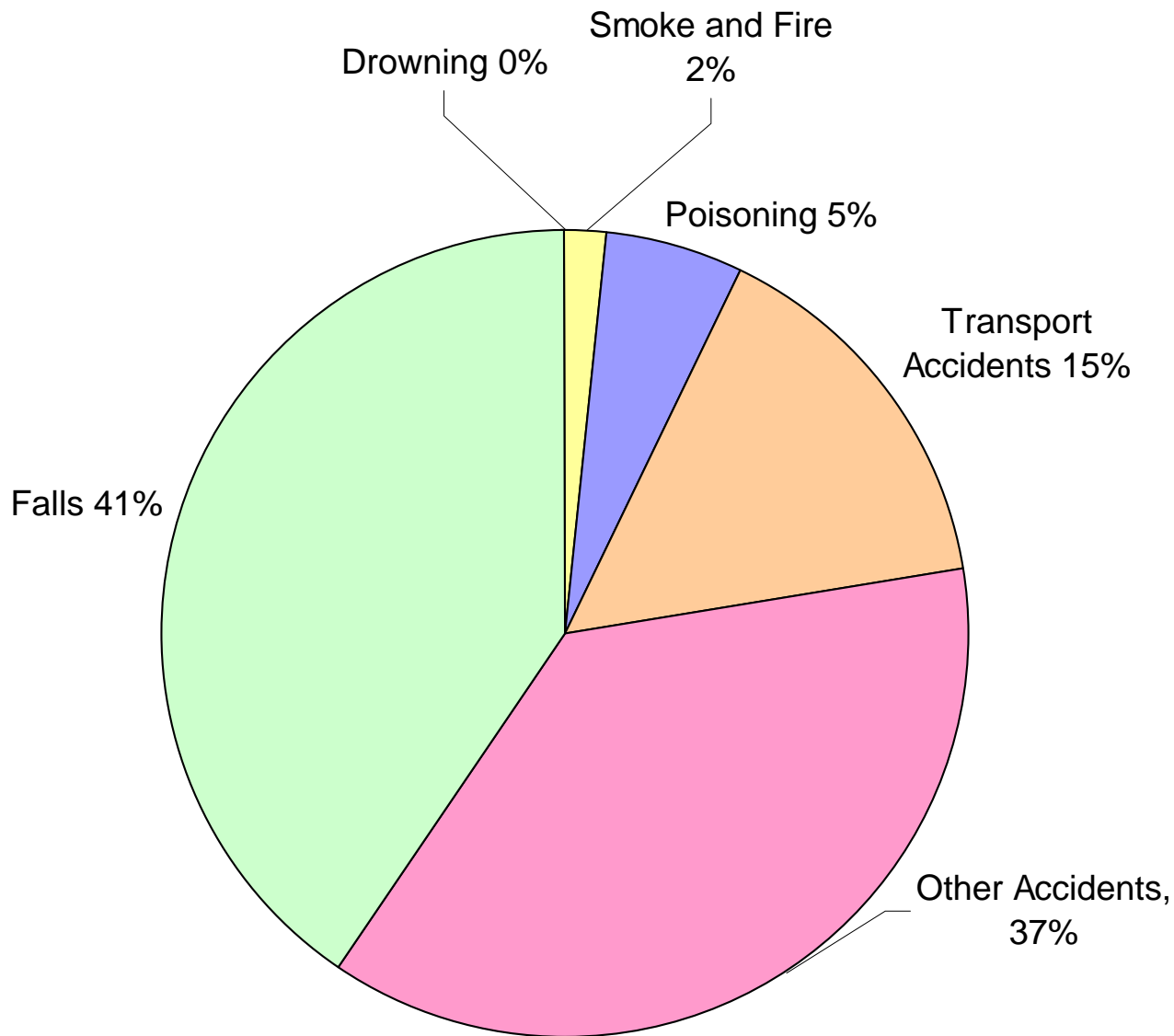
Main Causes of Accidental Death WMM (1995-2004) Females Aged 1-14



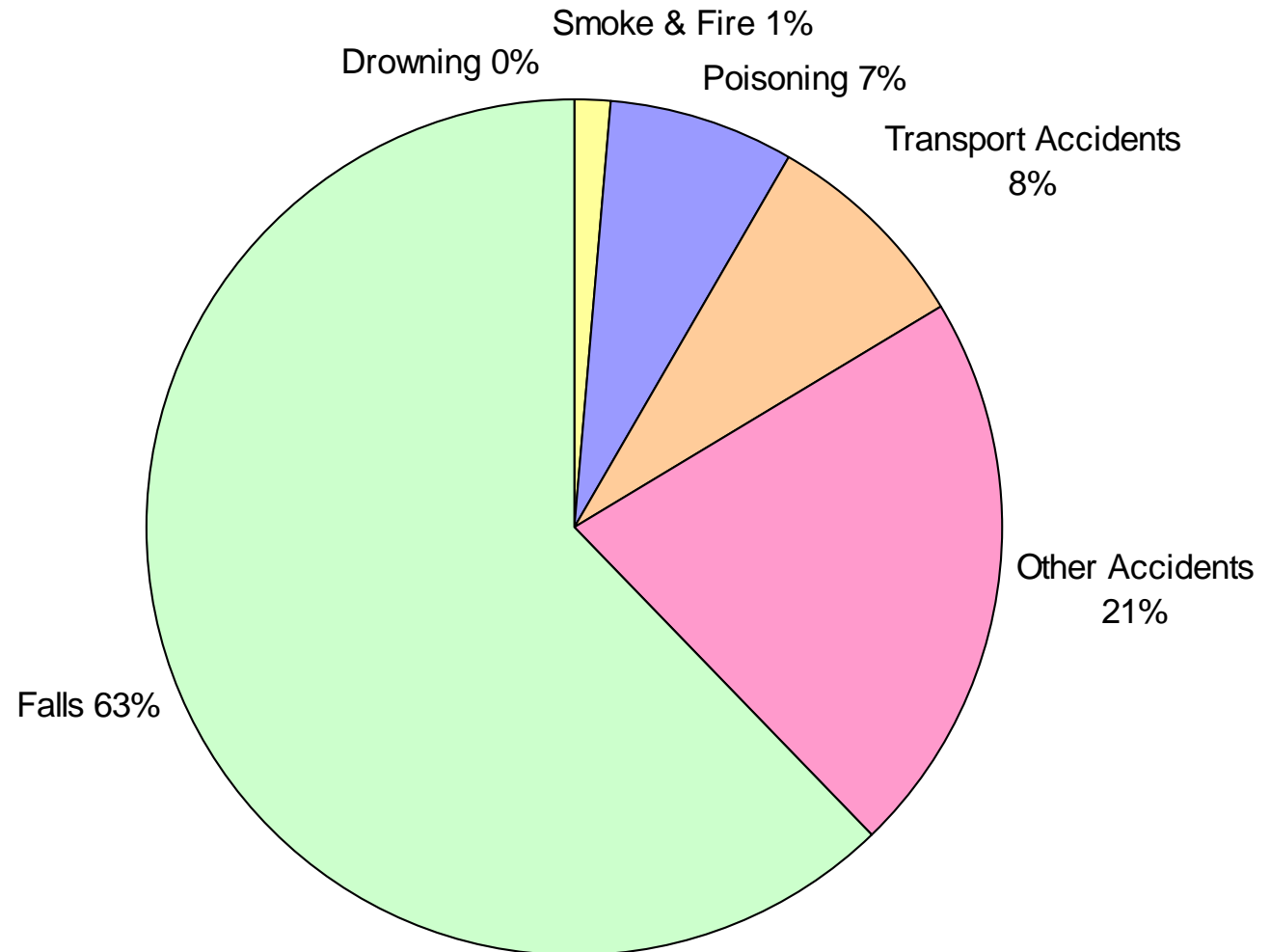
DSRs for admission for accidents, by GO, Age under 15 (2002-4)



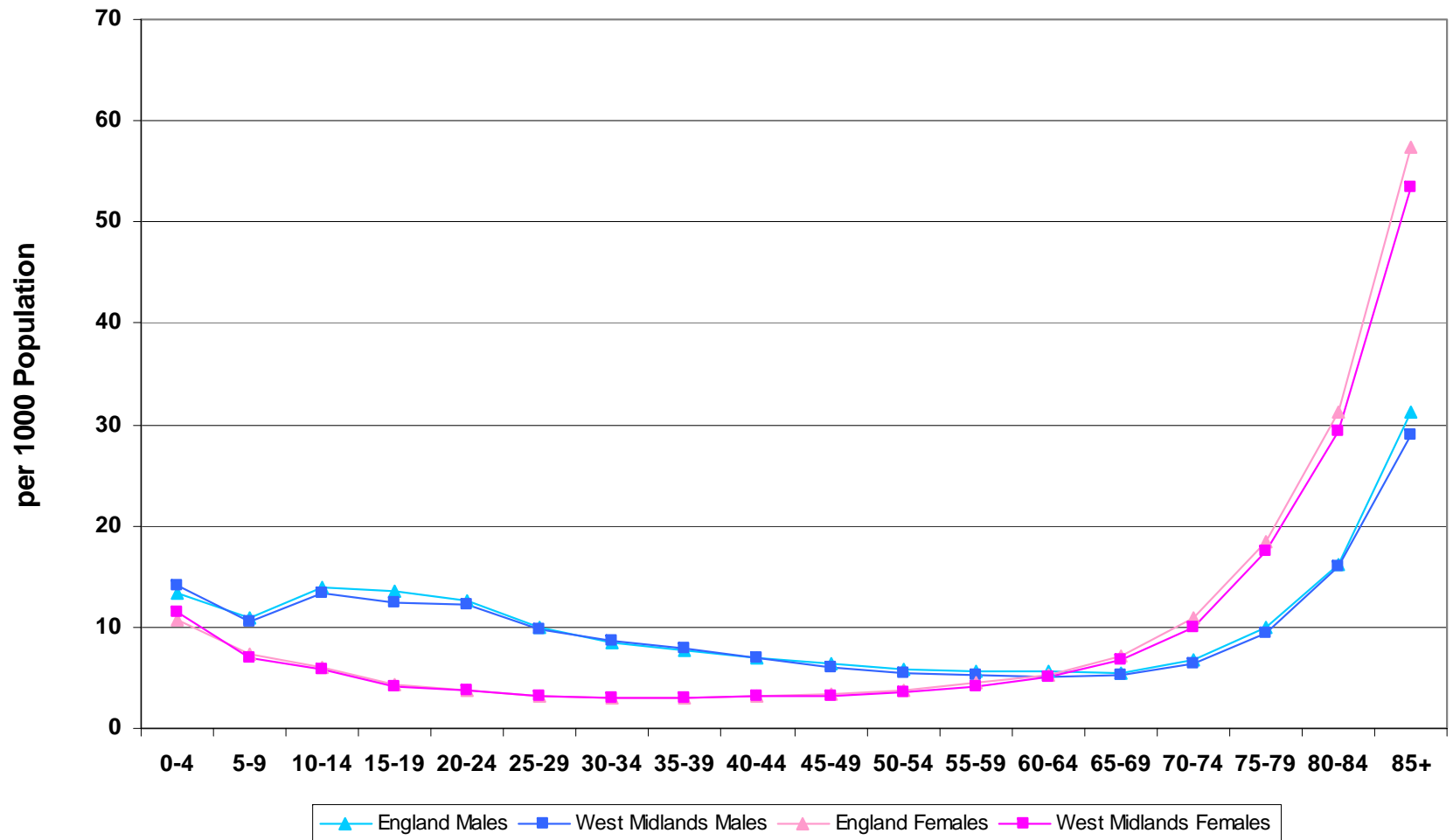
Main Causes of admission for accidents, WM, (2000-2004) Males aged under 15



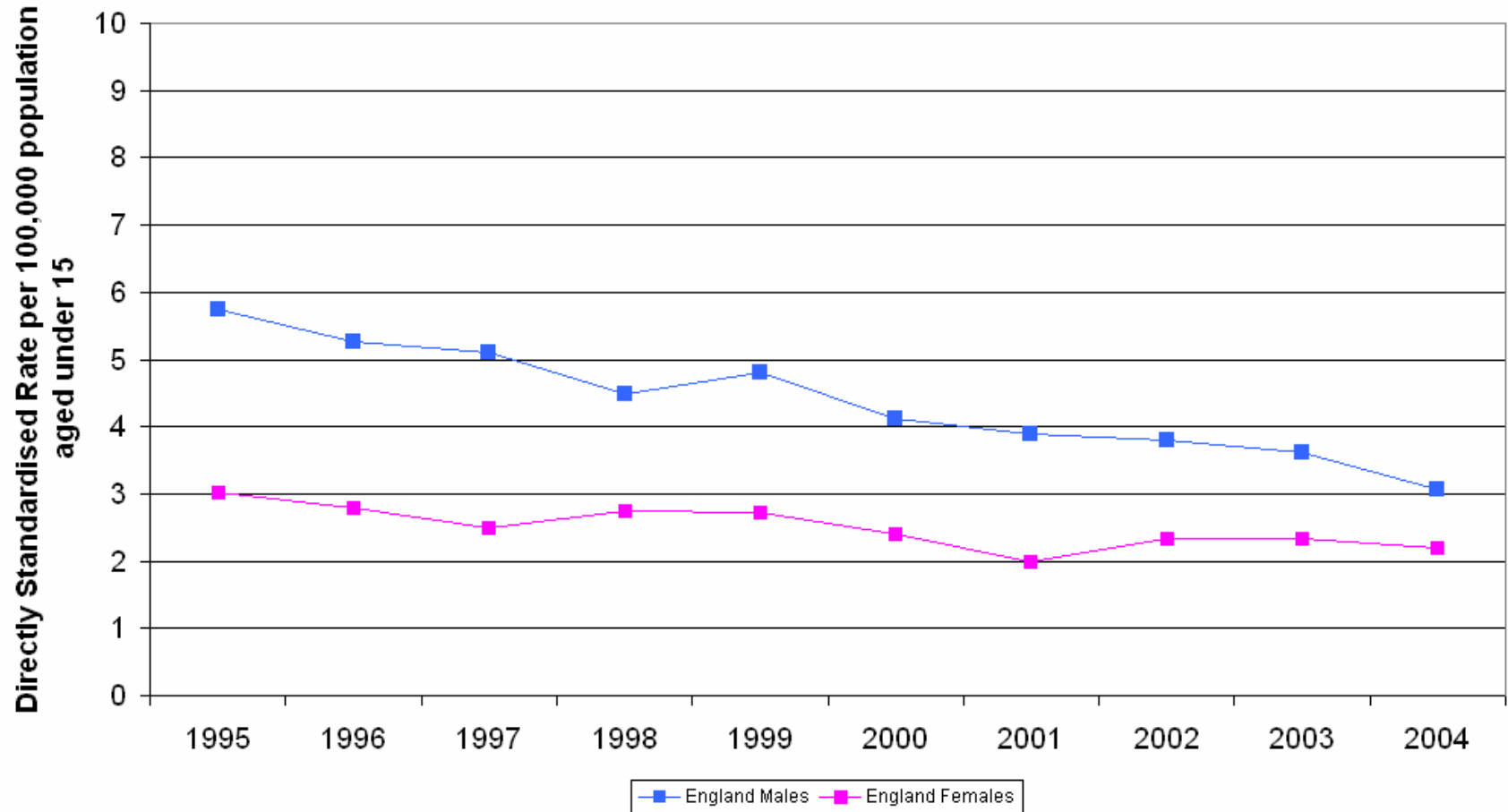
Main Causes of admission for accidents WM, (2000-2004) Females aged under15



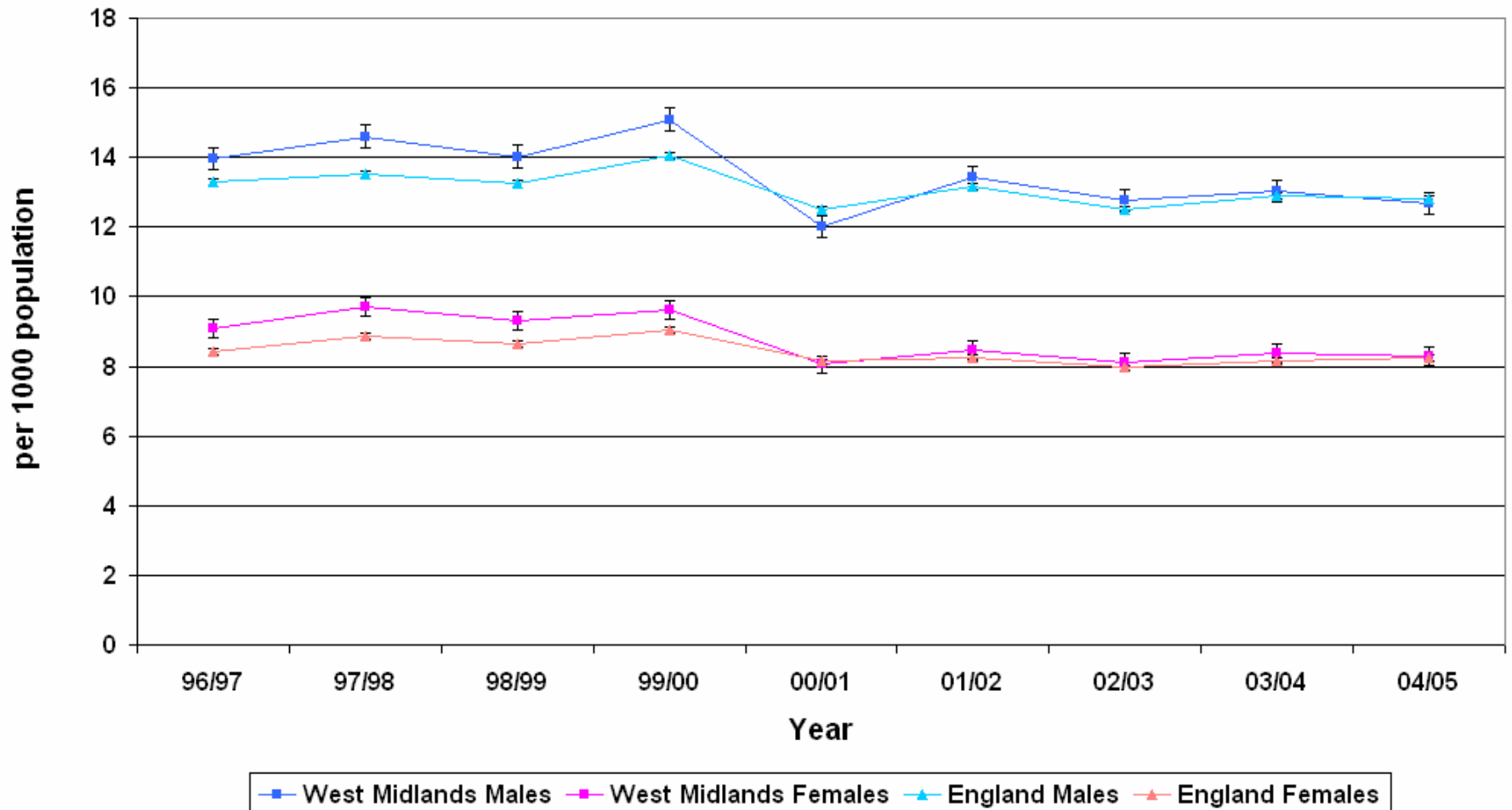
Age Specific Admission Rates for Accidents, WM (2000-2004)



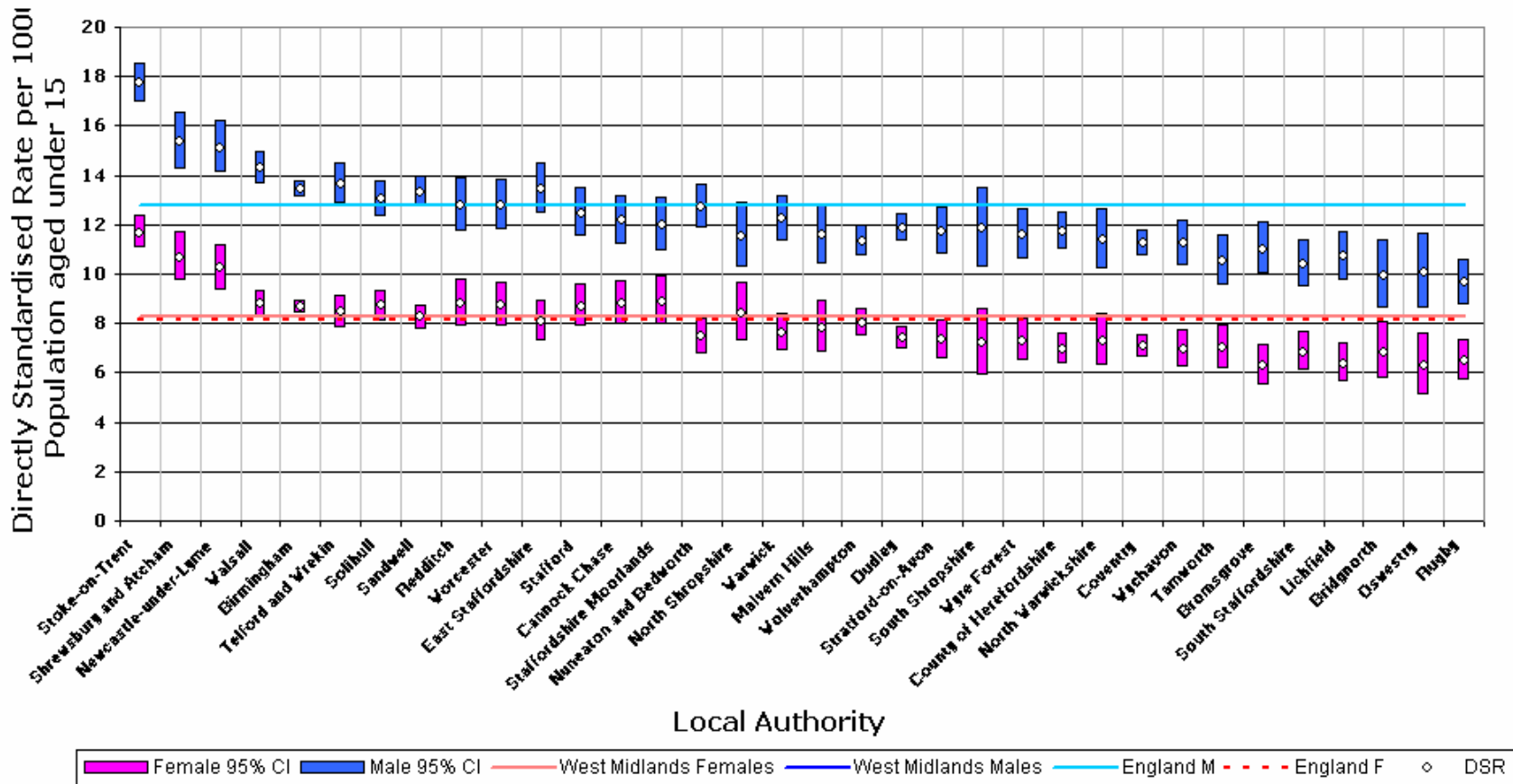
DSRs of accidental deaths, England, aged under 15, trend data (1995-2004)

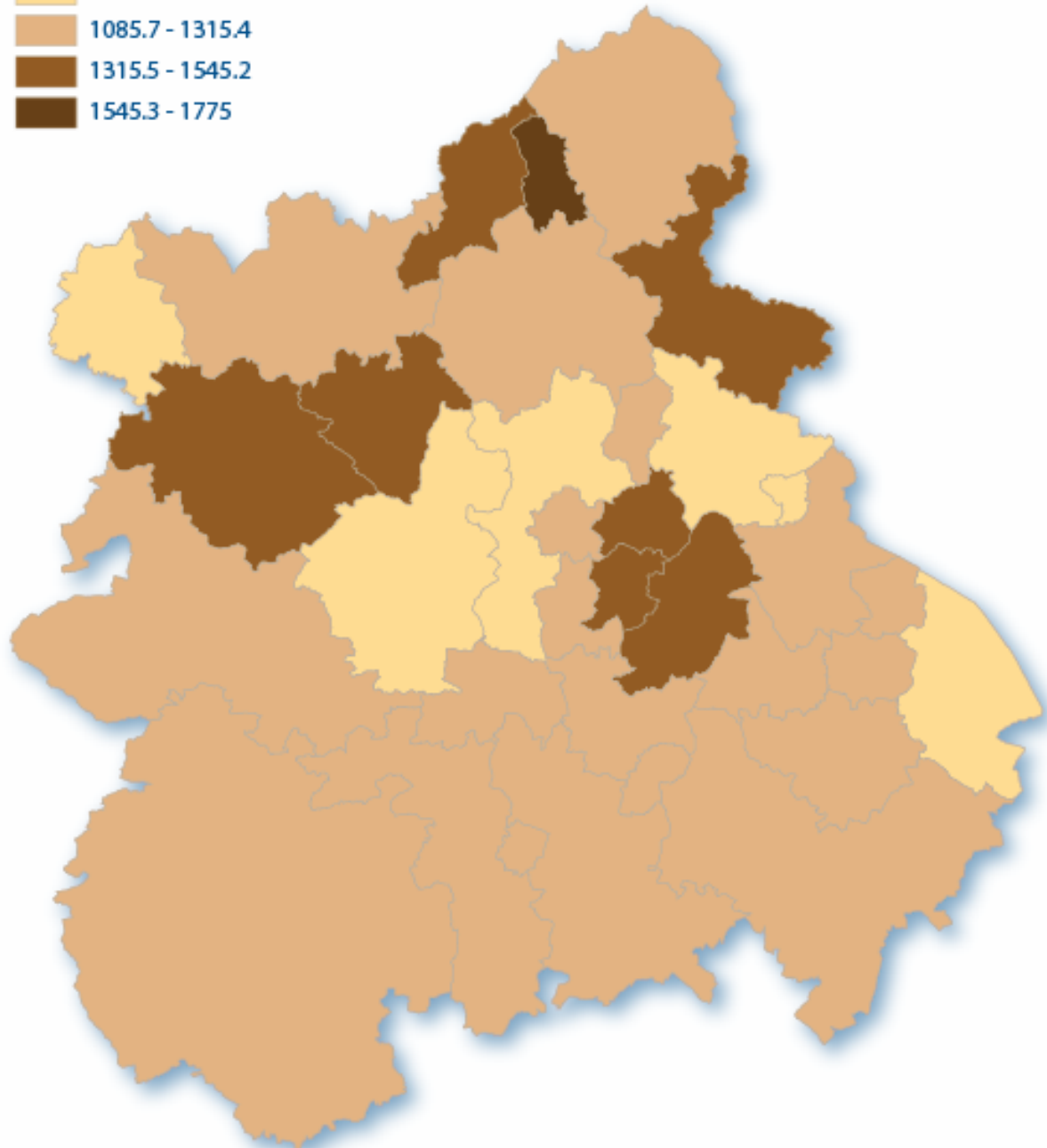
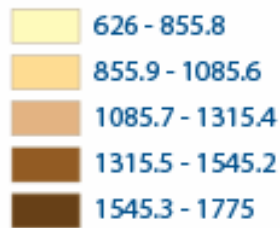


DSRs admissions for accidents in under 15s trend data 1996 -2005



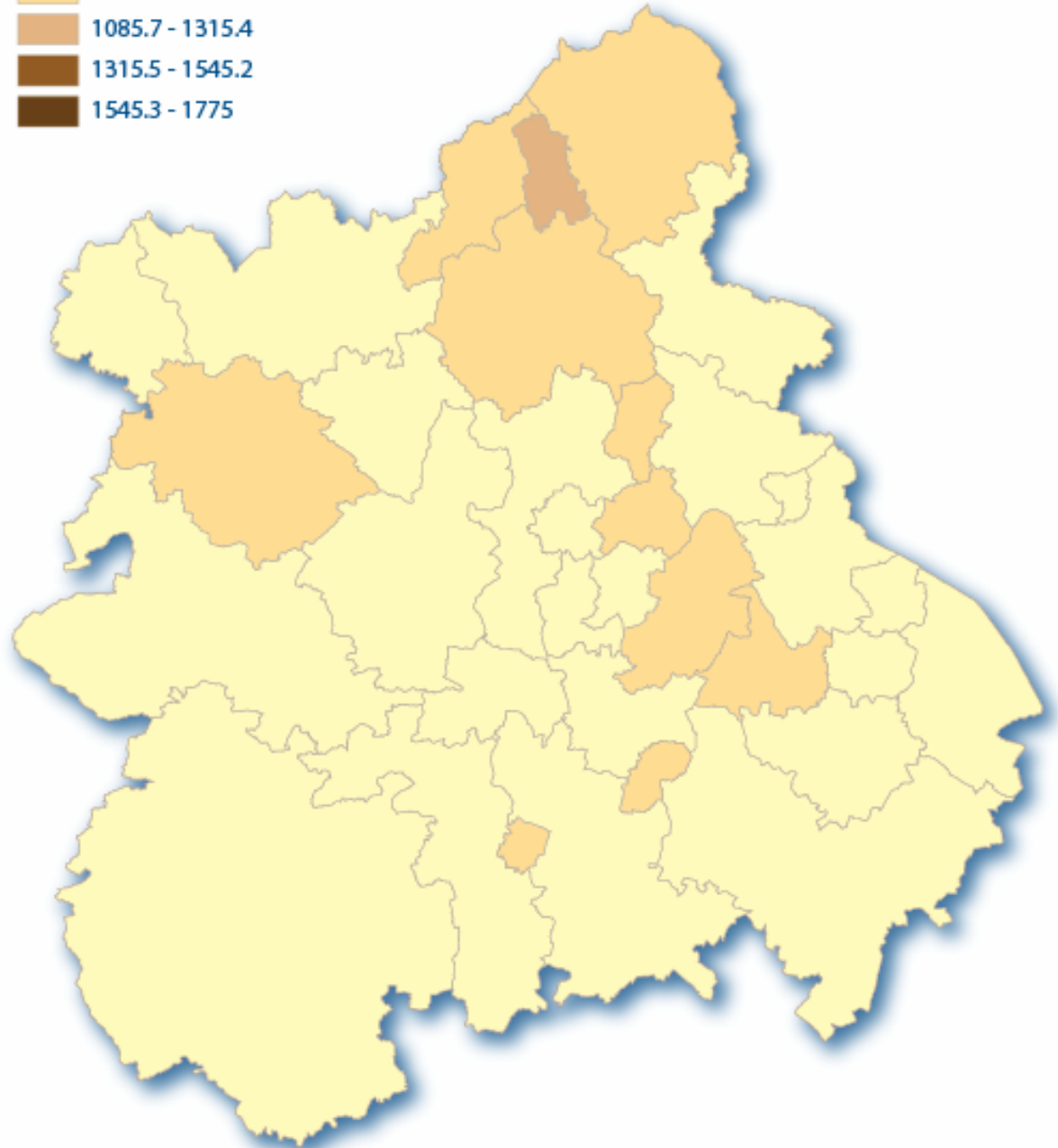
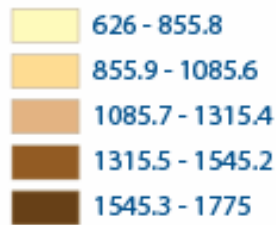
DSRs admission for accidents by WM LA (2000-2004) aged under 15



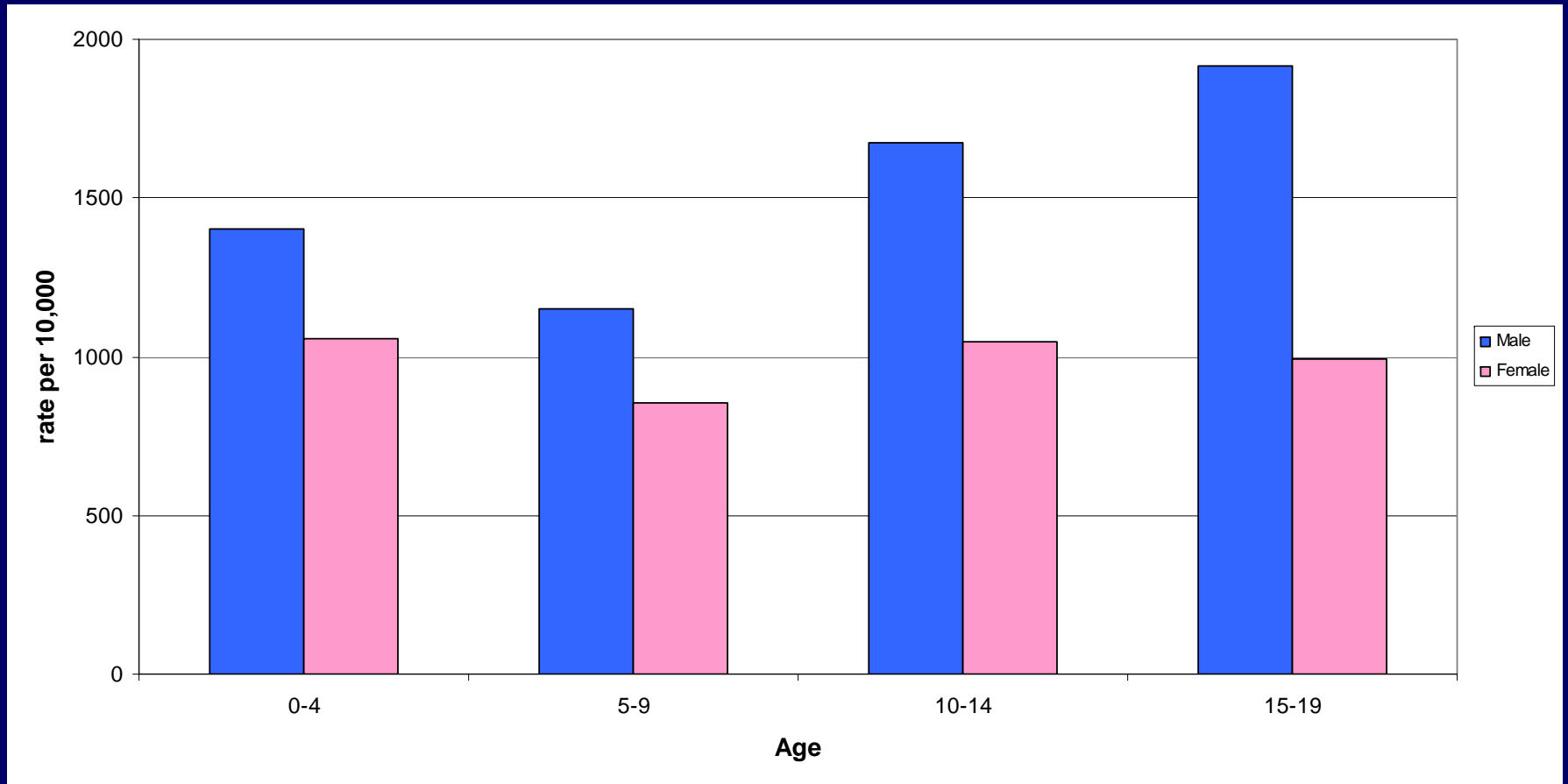


**Admission rates in
Males under 15,
West Midlands LA,
2000 -2005**

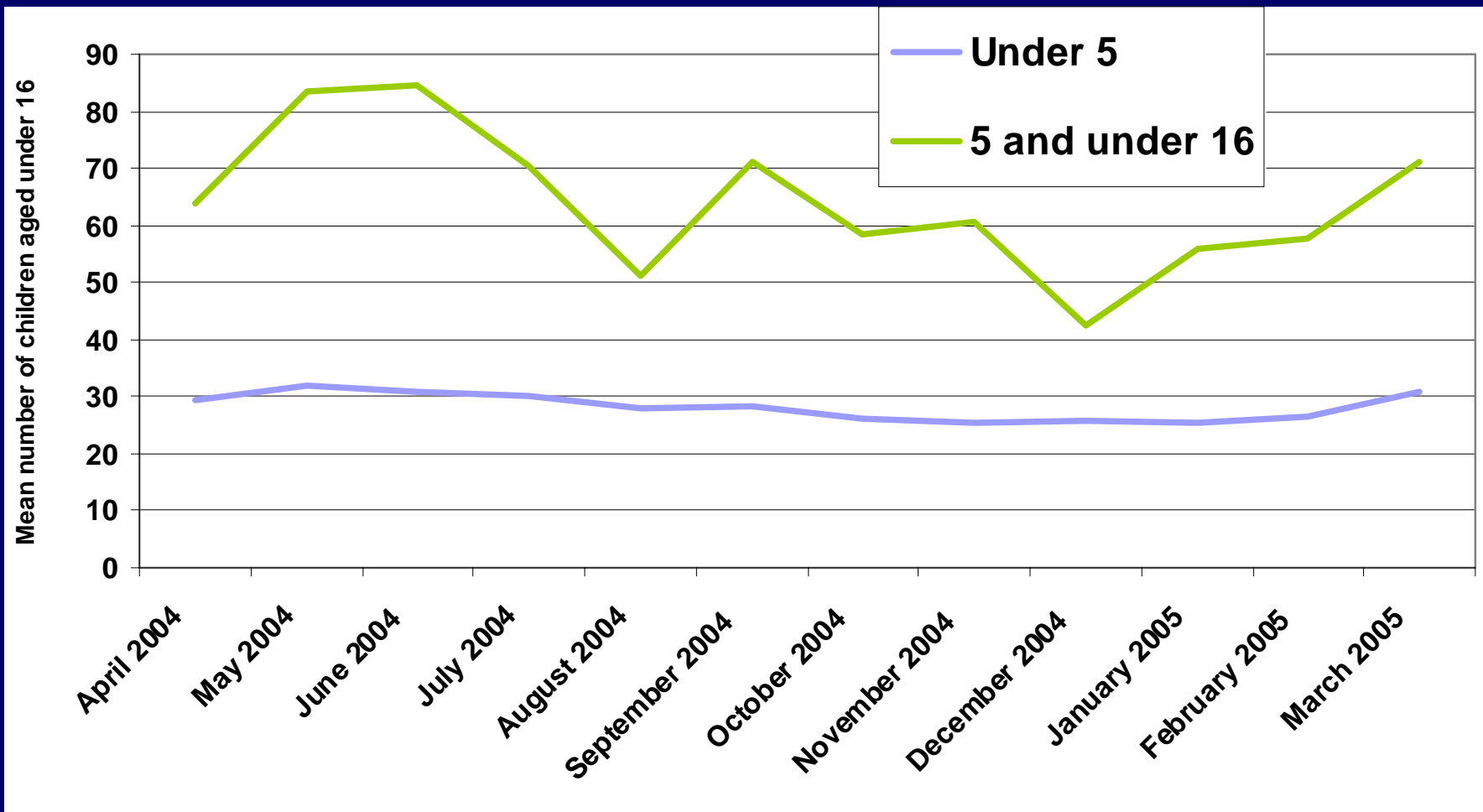
Admission rates in Females under 15, West Midlands LA, 2000 -2005



Estimated rates of attendance at A&E in WM by age and sex



Seasonal variation in A&E attendance 2004



Variations

- Variation in frequency and severity of accidents
- Variation in rates of presentation to A&E
- Variation in admission rates.