

# **Place of Death in the West Midlands**

Dr KS Sidhu

Consultant in Public Health  
Medicine

# Public Health

- Primary Prevention
- Secondary Prevention

# Public Health

- Primary Prevention
- Secondary Prevention
- Tertiary Prevention

# Outline

- Death Certification
- Results
- Why is it important?
- Go back to your PCTs and...

# Death Certification

- Process
- Death Certificate Fields
- Identification

# Process

- On diagnosing death
  - Diagnosing doctor completes death certificate
  - Enters various diagnoses
  - Verified by another doctor
  - Death is registered at local registrar of births and deaths
  - (Coroners cases excepted)

# Death Certificate Fields

- Patient details
- Occupational details
- Parents (for children)
- Diagnoses
  - Not just Primary , secondary and tertiary
- Address

# Address fields

- Residence
- Place of death
- Code for place of death
- Code for type of place of death



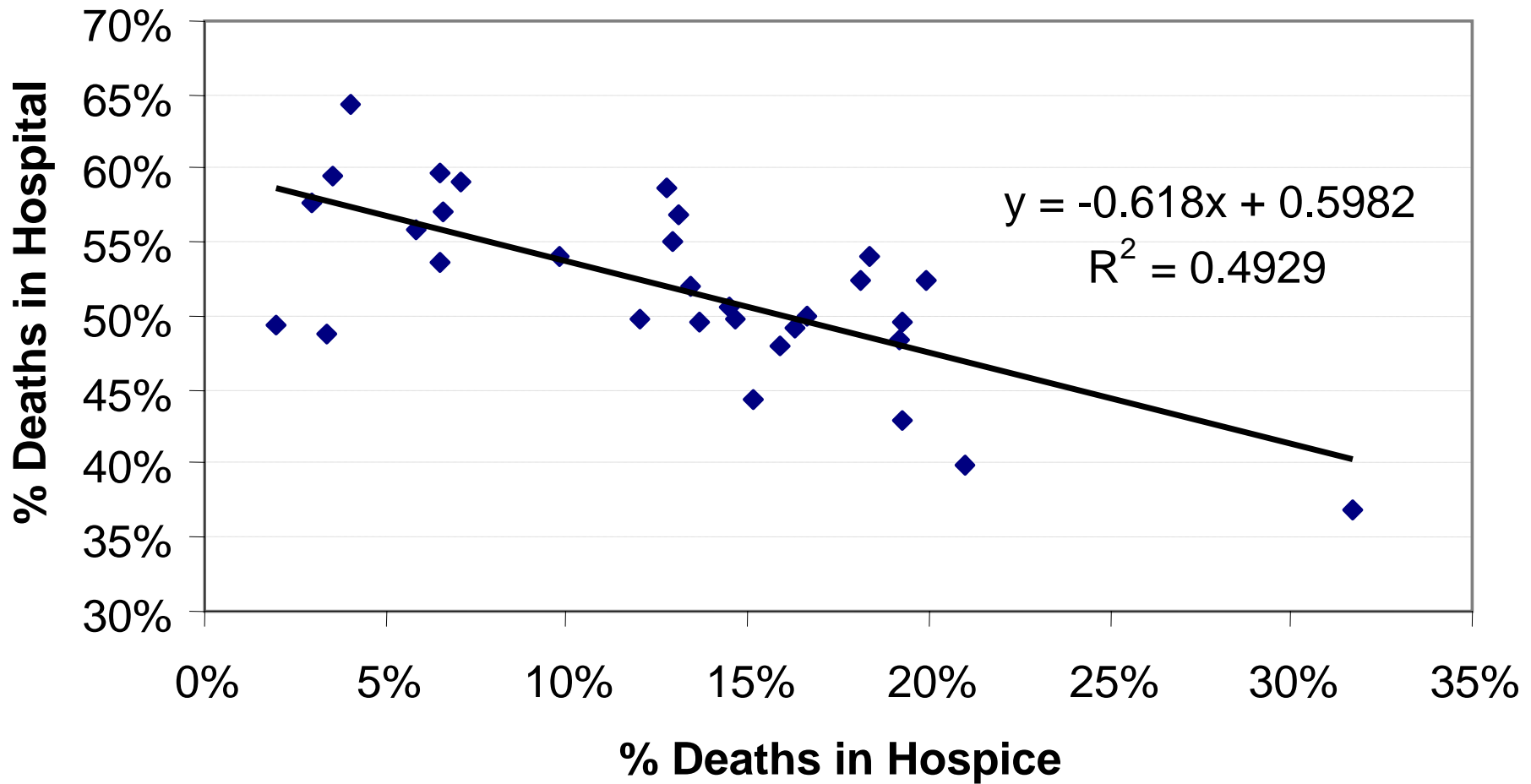
# Identification

- Code for place of death
  - National Provider Codes
- Type of place of death
  - Types of institution eg
    - Hospital
    - Home
    - Care Home
    - etc etc

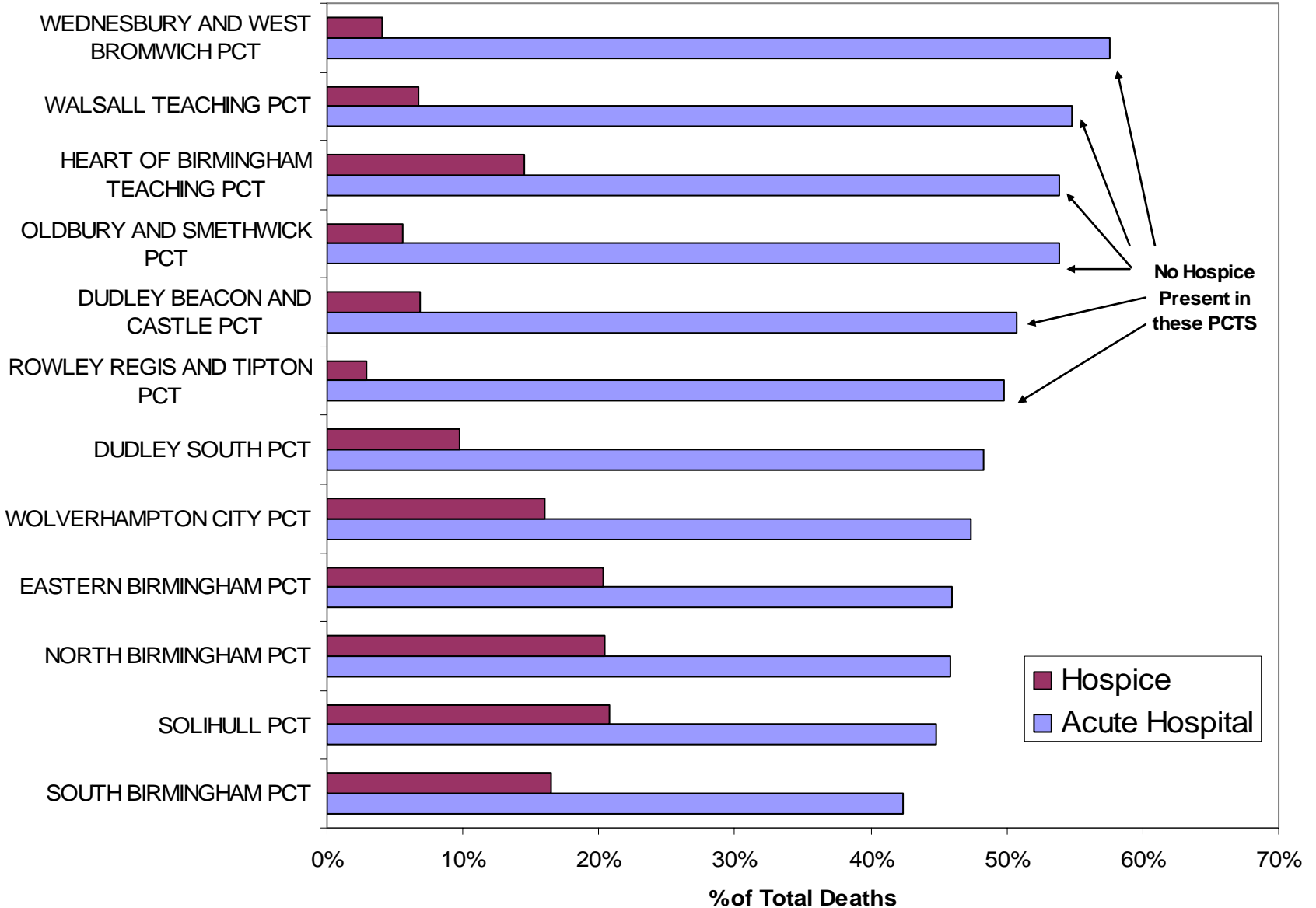
# WM RHA Place of death

% of All Deaths in Each Clinical Category	Place of death					Grand Total
	Other	Care Home	Home	Hospice	Hospital	
Chronic Renal Failure	1%	8%	7%	1%	84%	100%
Pulmonary Disease	0%	10%	21%	1%	68%	100%
Heart Failure	1%	20%	14%	0%	65%	100%
Cancer	1%	9%	25%	13%	52%	100%
Dementia	4%	58%	4%	0%	34%	100%
Grand Total	1%	14%	21%	9%	55%	100%

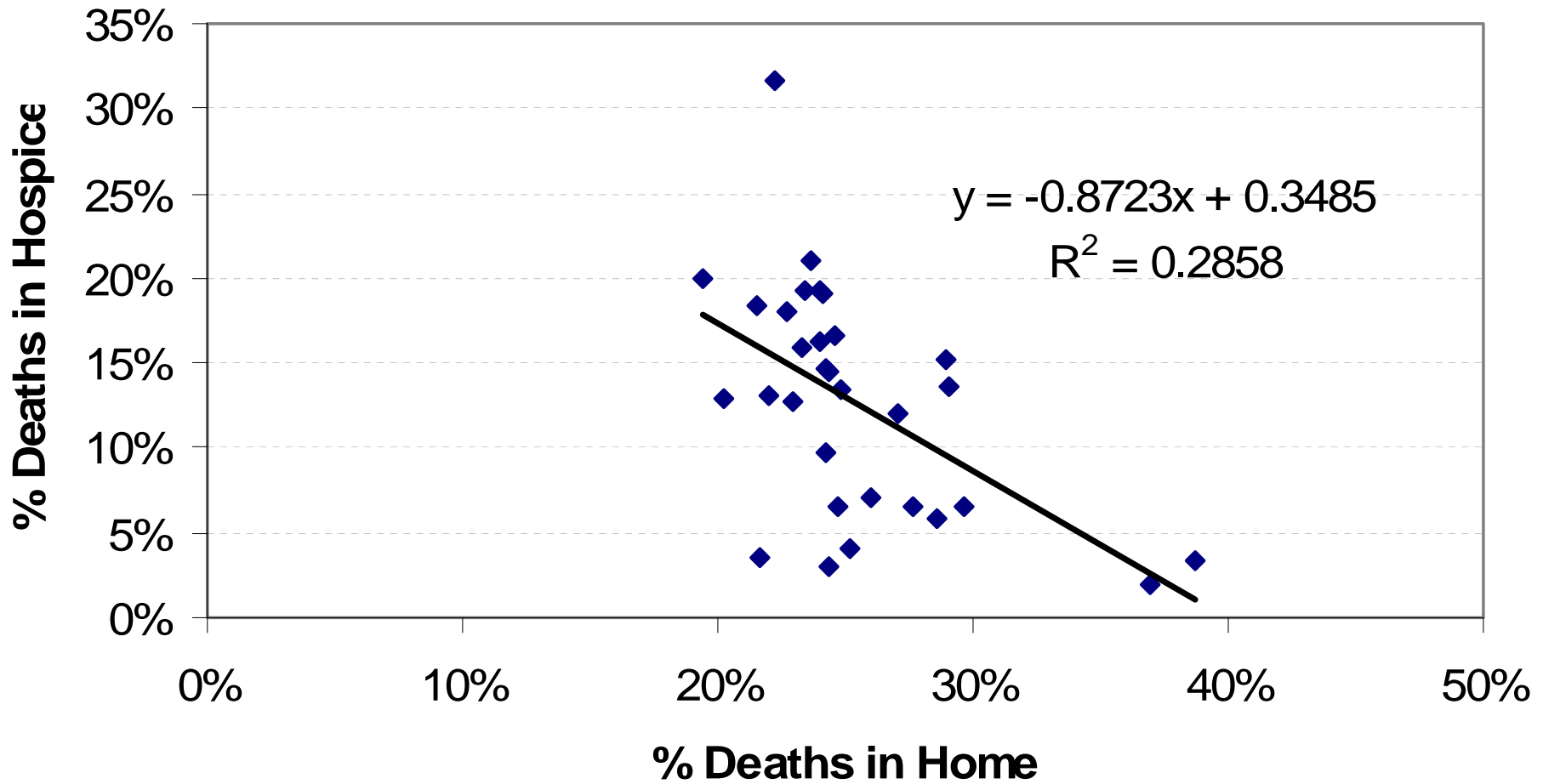
# Cancer deaths – WMRHA



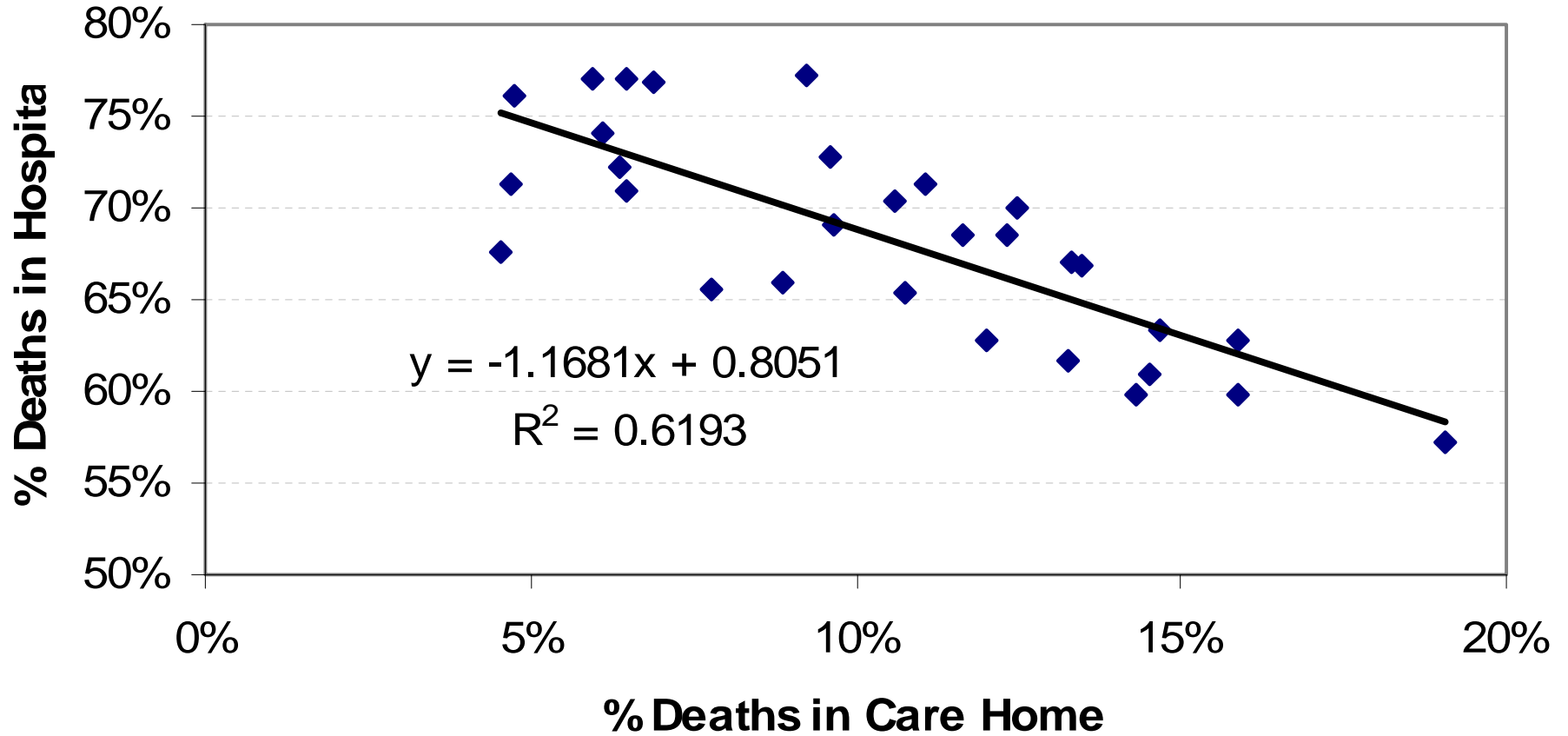
# Place of Death Cancer Deaths 1996 - 2002



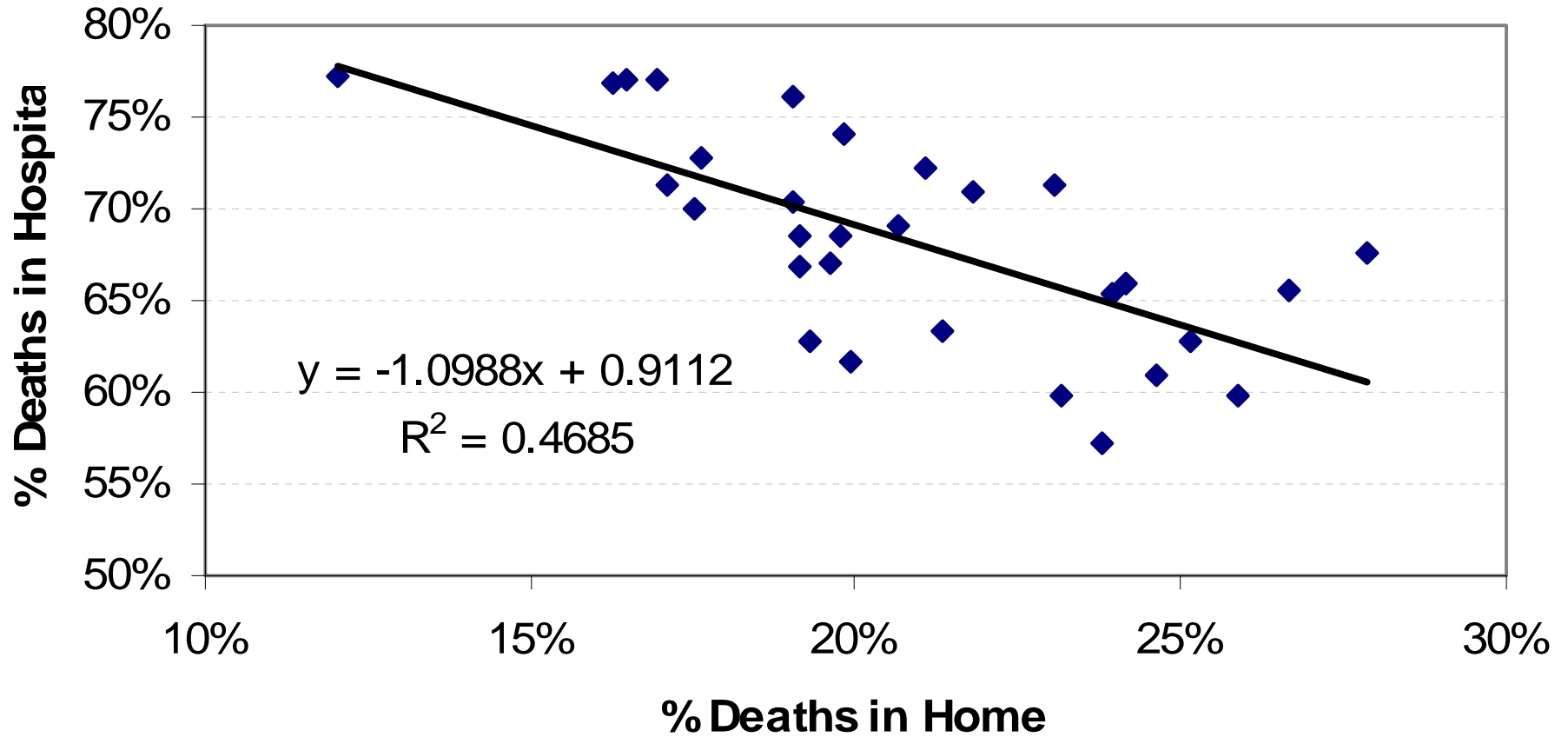
# Cancer deaths - WMRHA



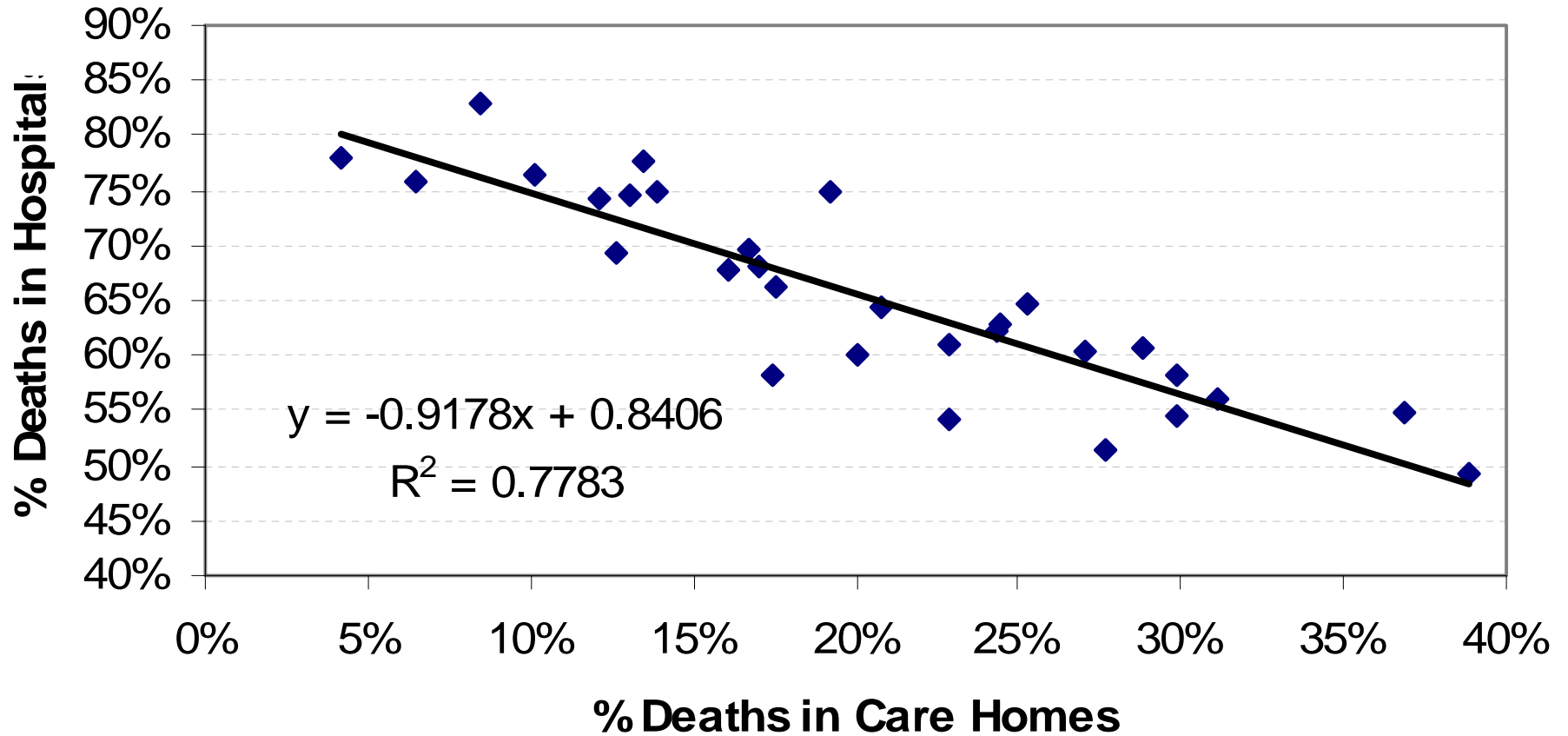
# COPD deaths - WMRHA



# COPD deaths - WMRHA

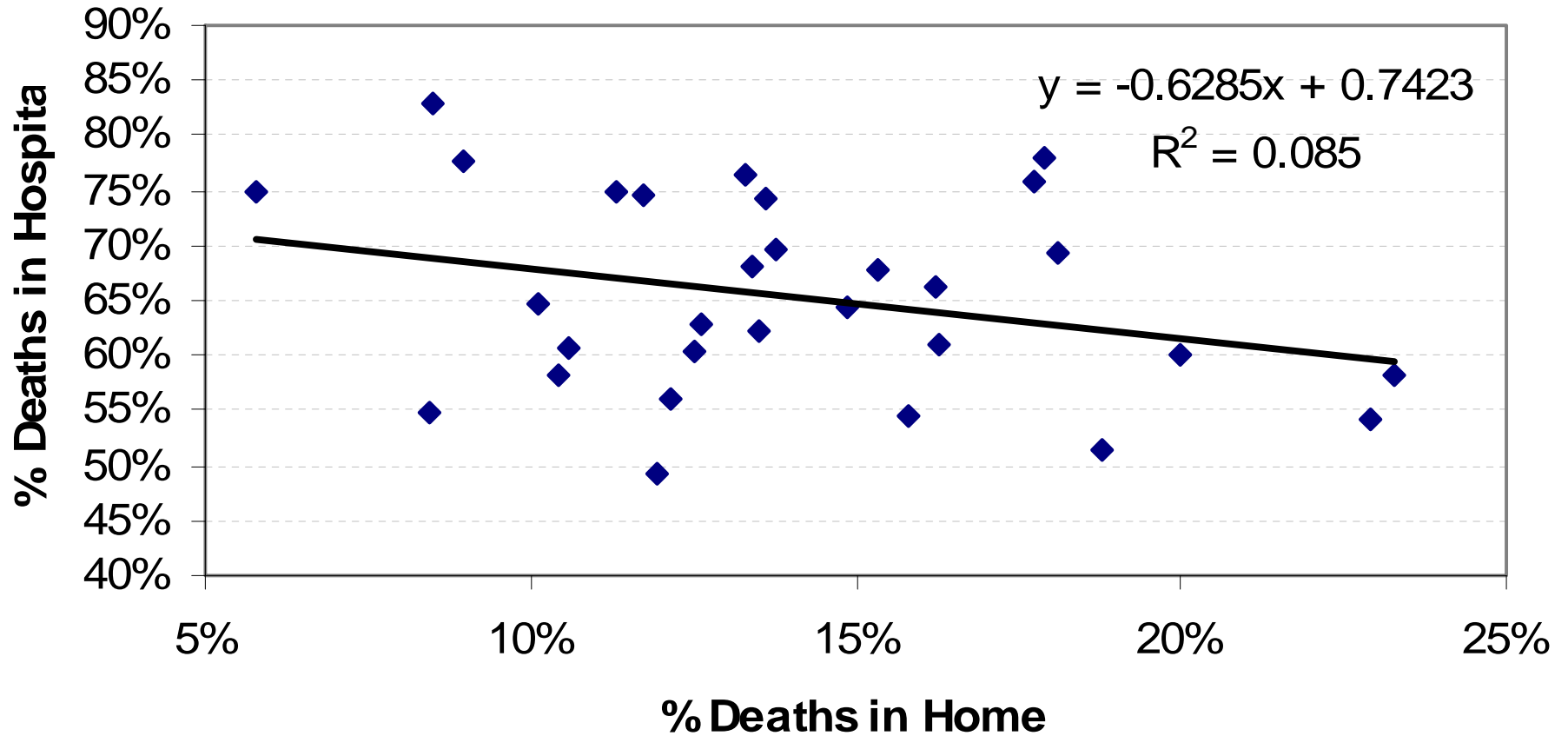


# Heart Failure Deaths - WMRHA

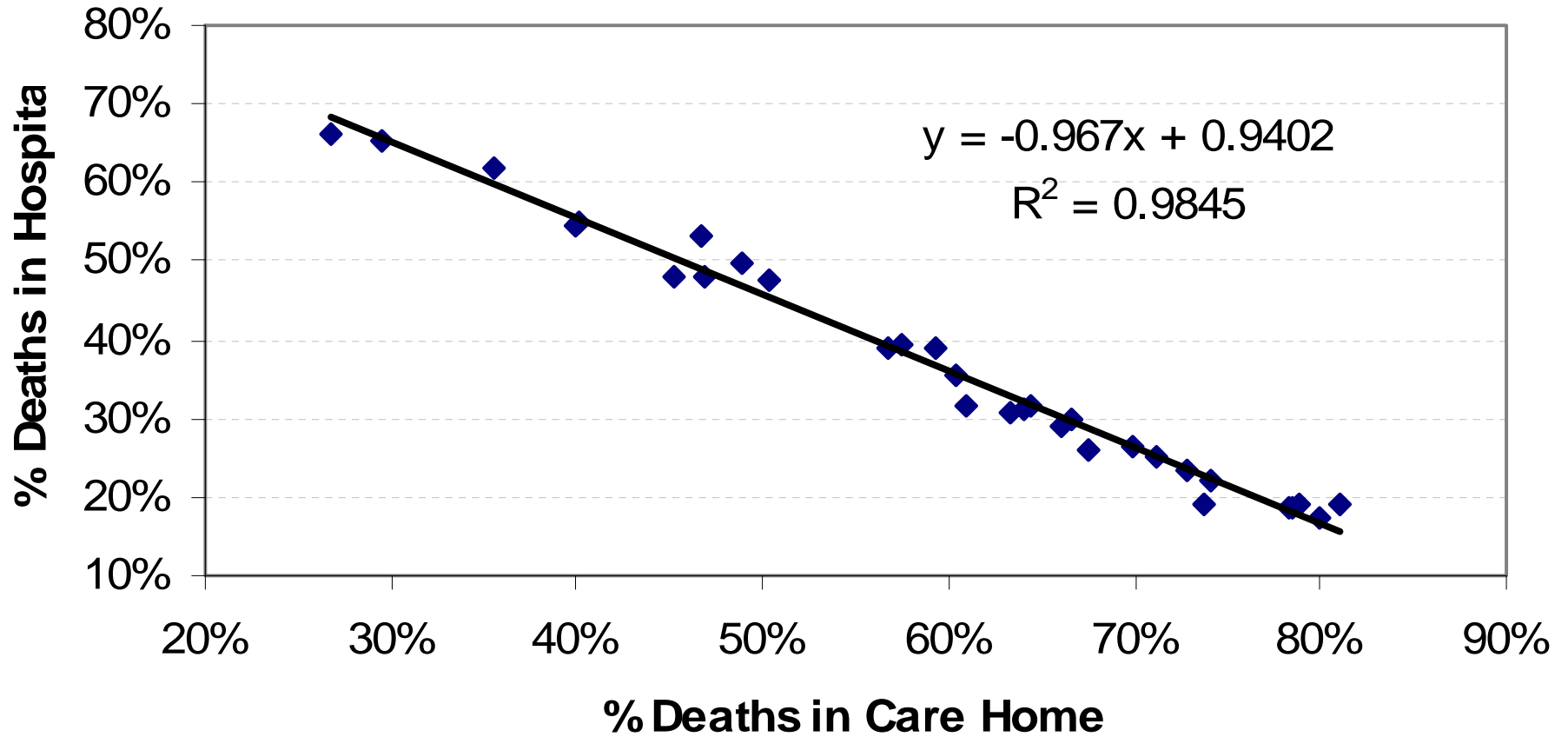




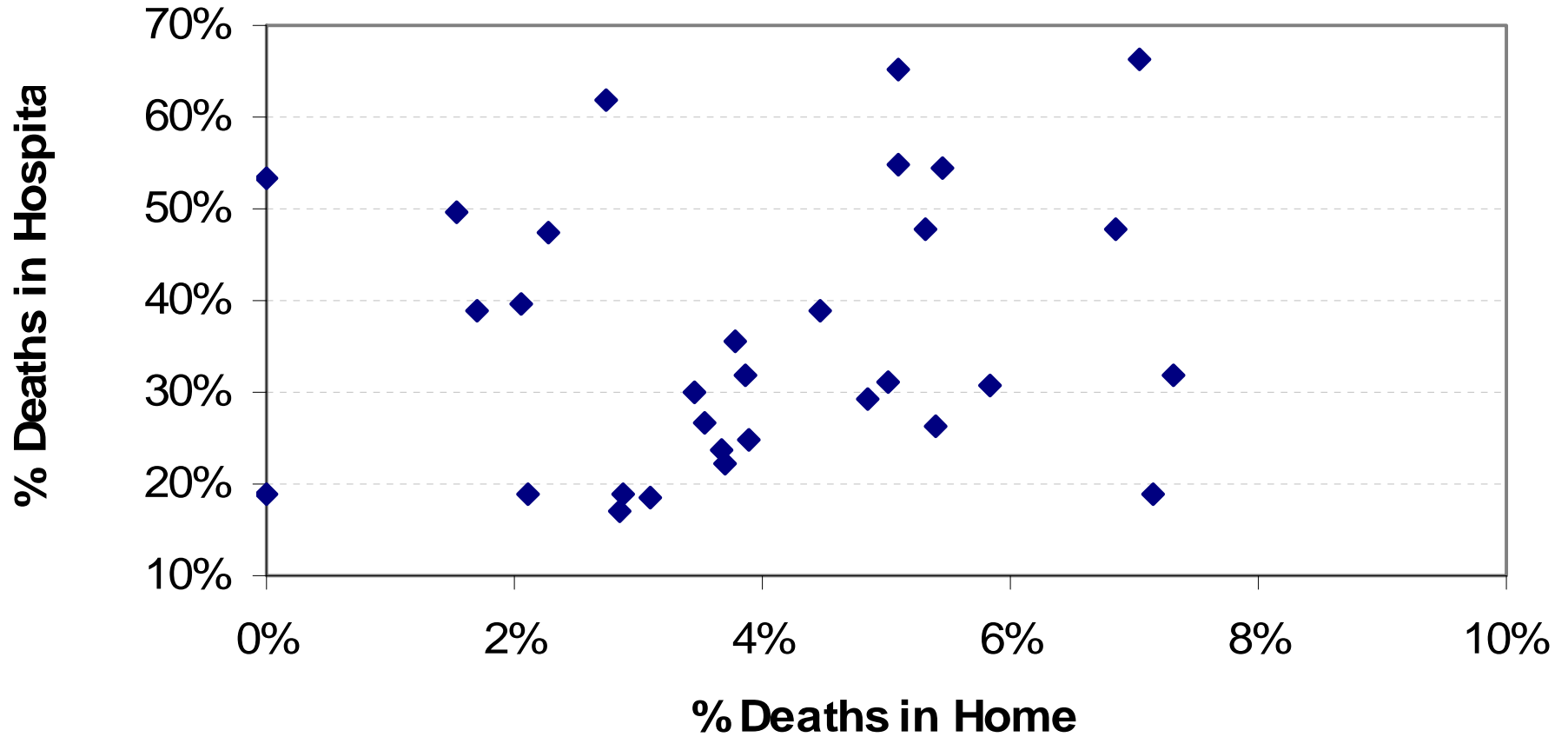
# Heart Failure Deaths - WMRHA



# Renal deaths - WMRHA



# Renal deaths - WMRHA



# Results

- Correlations
  - Cause or effect...
  - Association...

# Results

- Correlations
  - Cause or effect... Probably yes for cancer
  - Association...too early to say for COPD, Heart Failure and Renal Failure



# Why is it important?

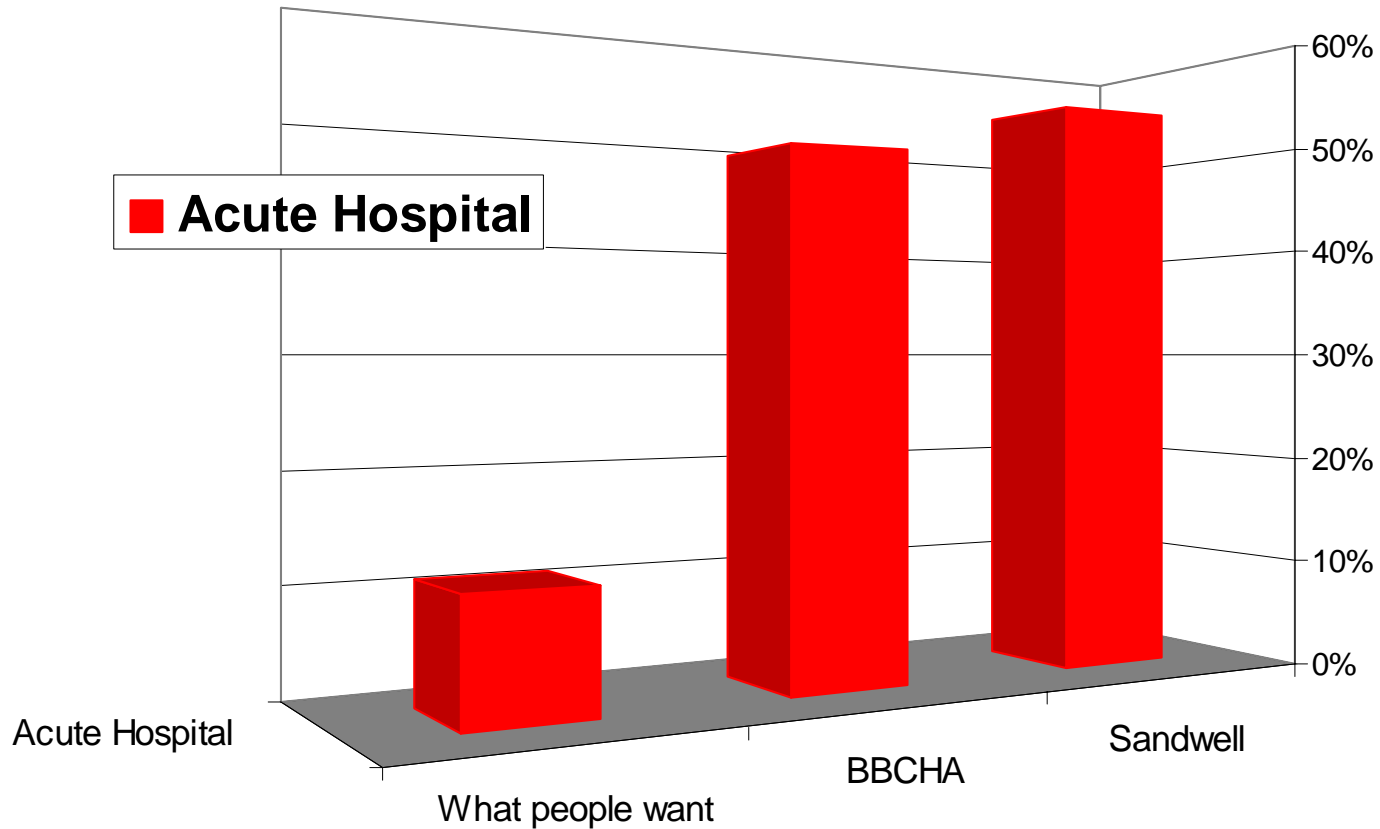
- Choice – End of Life
- Cost
- Impact
- White Paper

# Choice

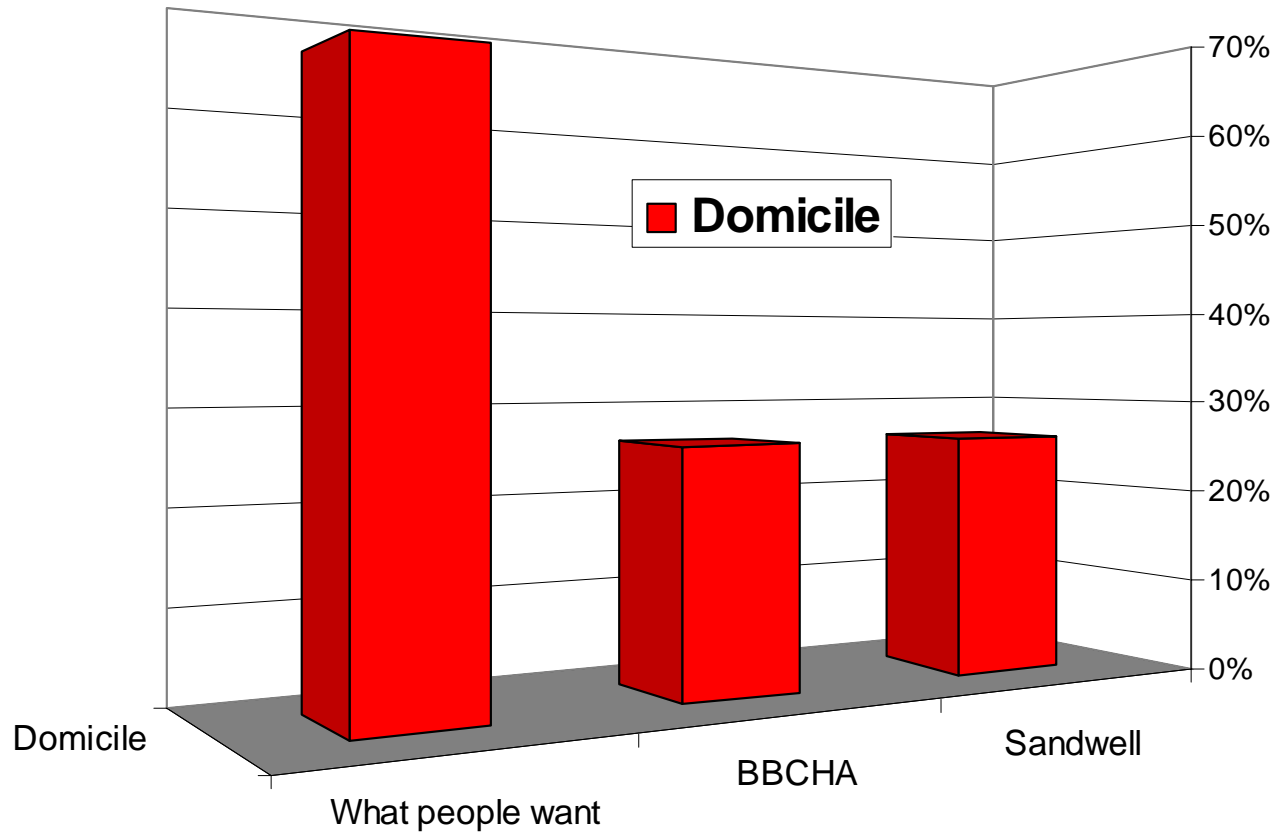
- When cancer patients are asked where they want to die...



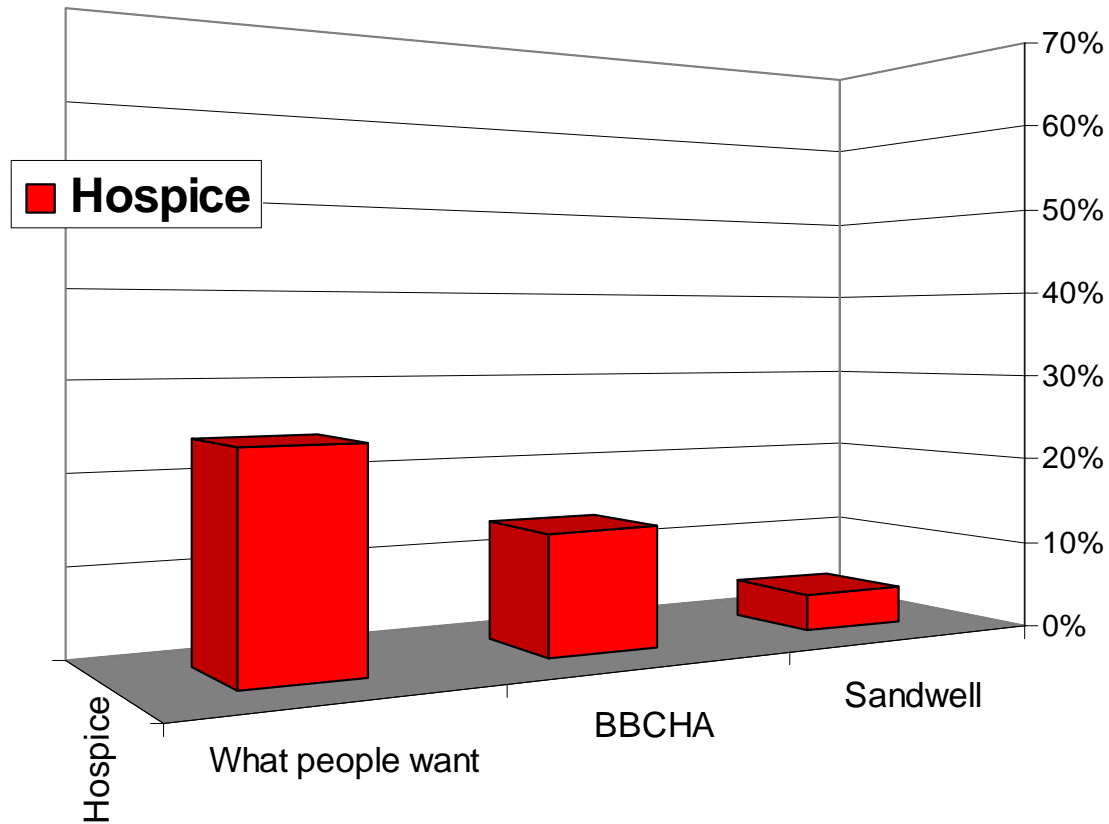
# Where do people with cancer want to die?



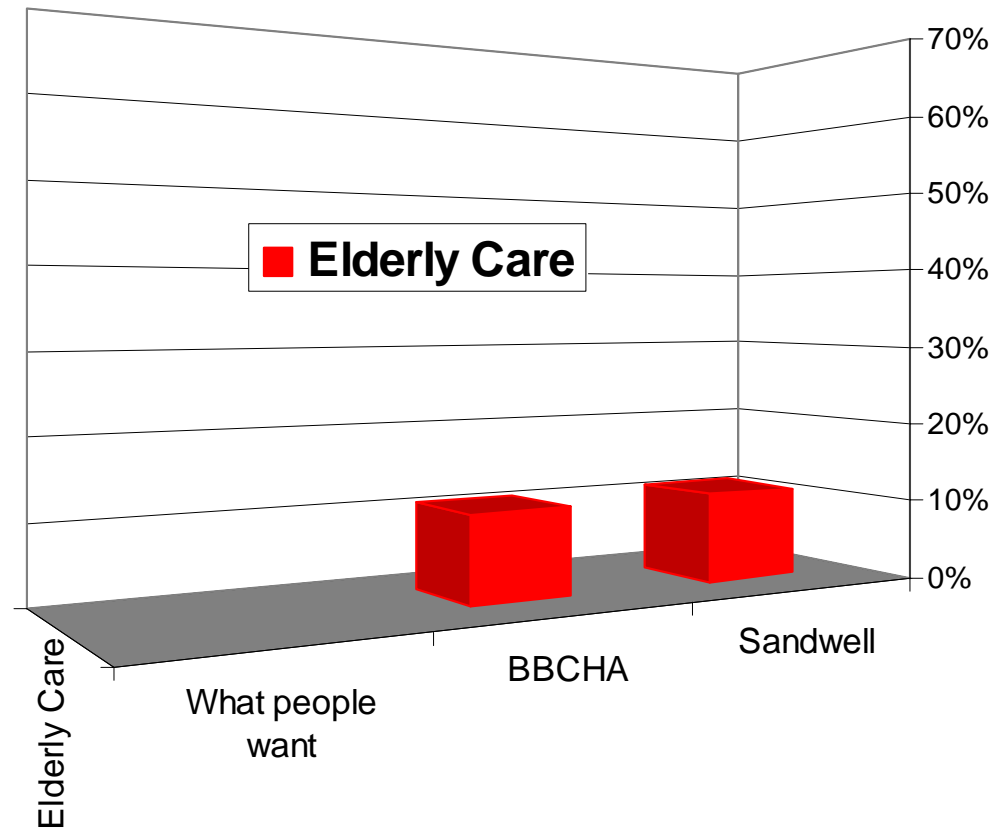
# Where do people with cancer want to die?



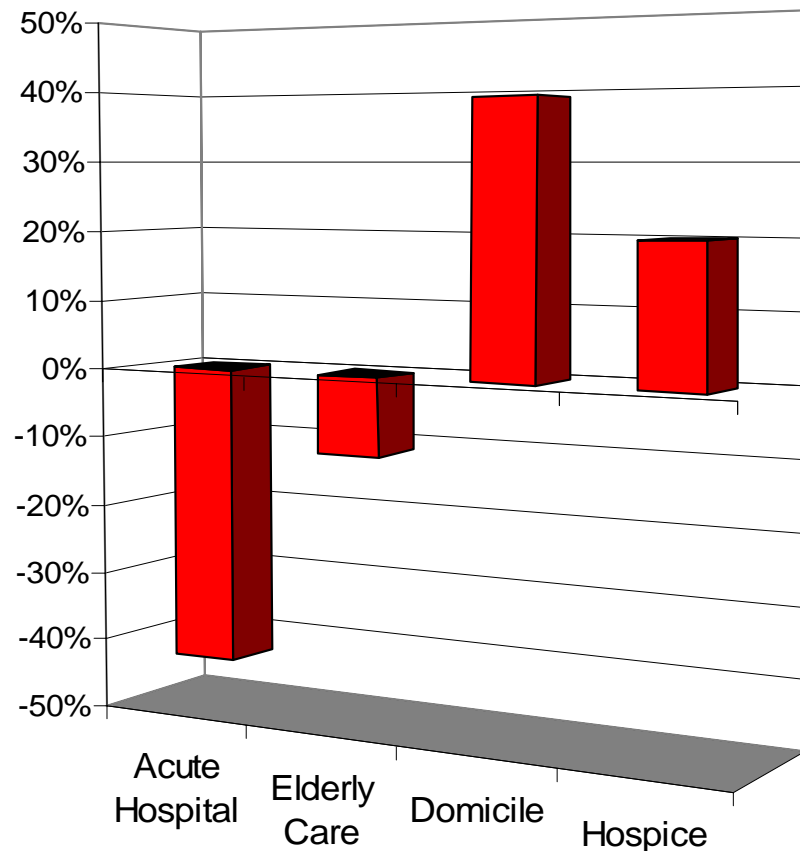
# Where do people with cancer want to die?



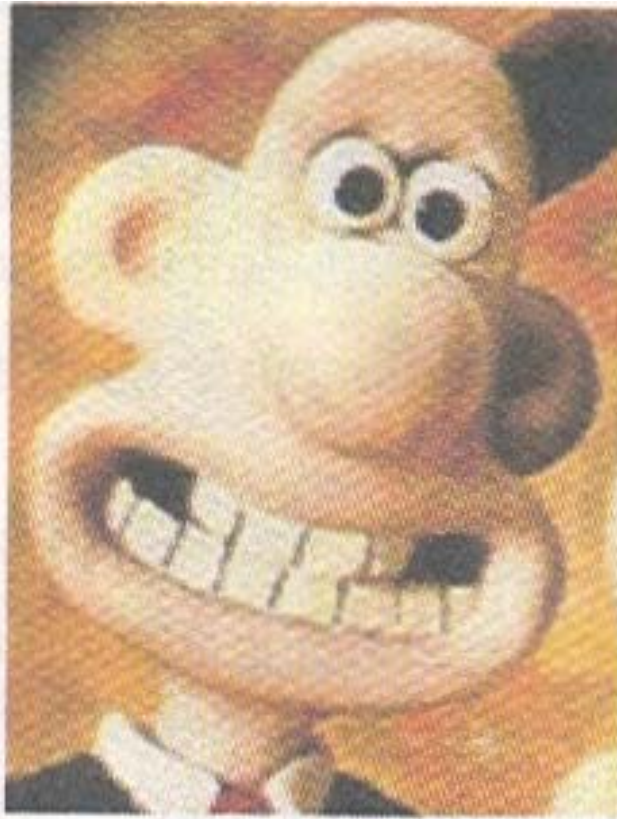
# Where do people with cancer want to die?



# What changes are required to meet the needs of people who are dying?







# Cost



# BBCHA Death Data 1996 – 2000

<b>Chronic Condition</b>	<b>Average Annual number of deaths in hospital</b>	<b>% of All deaths from condition that occur in hospital</b>
<b>Cancer</b>	<b>3539</b>	<b>47%</b>
<b>Heart Failure</b>	<b>2035</b>	<b>58%</b>
<b>Pulmonary Disease</b>	<b>1268</b>	<b>61%</b>
<b>Chronic Renal Failure</b>	<b>381</b>	<b>78%</b>
<b>Dementia</b>	<b>202</b>	<b>22%</b>
<b>Motor Neurone Disease</b>	<b>25</b>	<b>45%</b>

# When do people die in hospital?

- 50% die in first week
- 20% die in second week
- 10% die in third week
  
- Except dementia

# Impact

# BBCHA HES 01 – 03

Emergency admissions end with death

<b>Clinical Group</b>	
	Admissions under all consultants (physicians, surgeons etc etc)
<b>Cancer</b>	£5,581,986
<b>Chronic Pulmonary Disease</b>	£1,945,350
<b>Chronic Renal Failure</b>	£1,222,098
<b>Dementia</b>	£1,078,544
<b>Heart Failure</b>	£2,037,493
<b>MND</b>	£75,698

# BBCHA HES 01 – 03

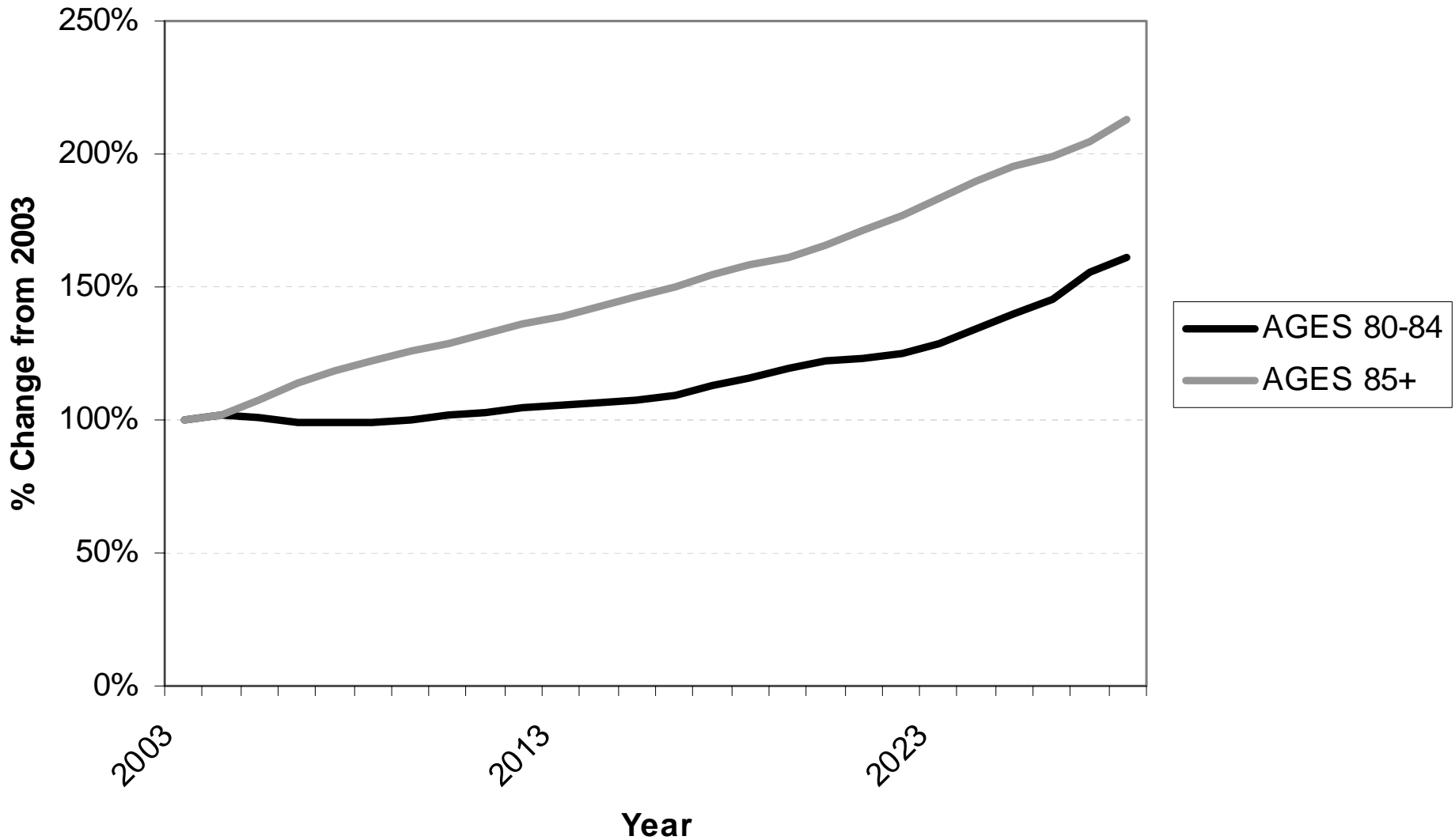
Emergency admissions end with death

<b>Clinical Group</b>	<b>Adjusted cost</b>		
	<b>Admission under physicians*</b>	Admissions under all consultants (physicians, surgeons etc etc)	% of costs for all admissions that resulted in death under physicians*
<b>Cancer</b>	£3,751,222	£5,581,986	67%
<b>Chronic Pulmonary Disease</b>	£1,699,345	£1,945,350	87%
<b>Chronic Renal Failure</b>	£1,052,576	£1,222,098	86%
<b>Dementia</b>	£966,348	£1,078,544	90%
<b>Heart Failure</b>	£1,820,869	£2,037,493	89%
<b>MND</b>	£55,450	£75,698	73%



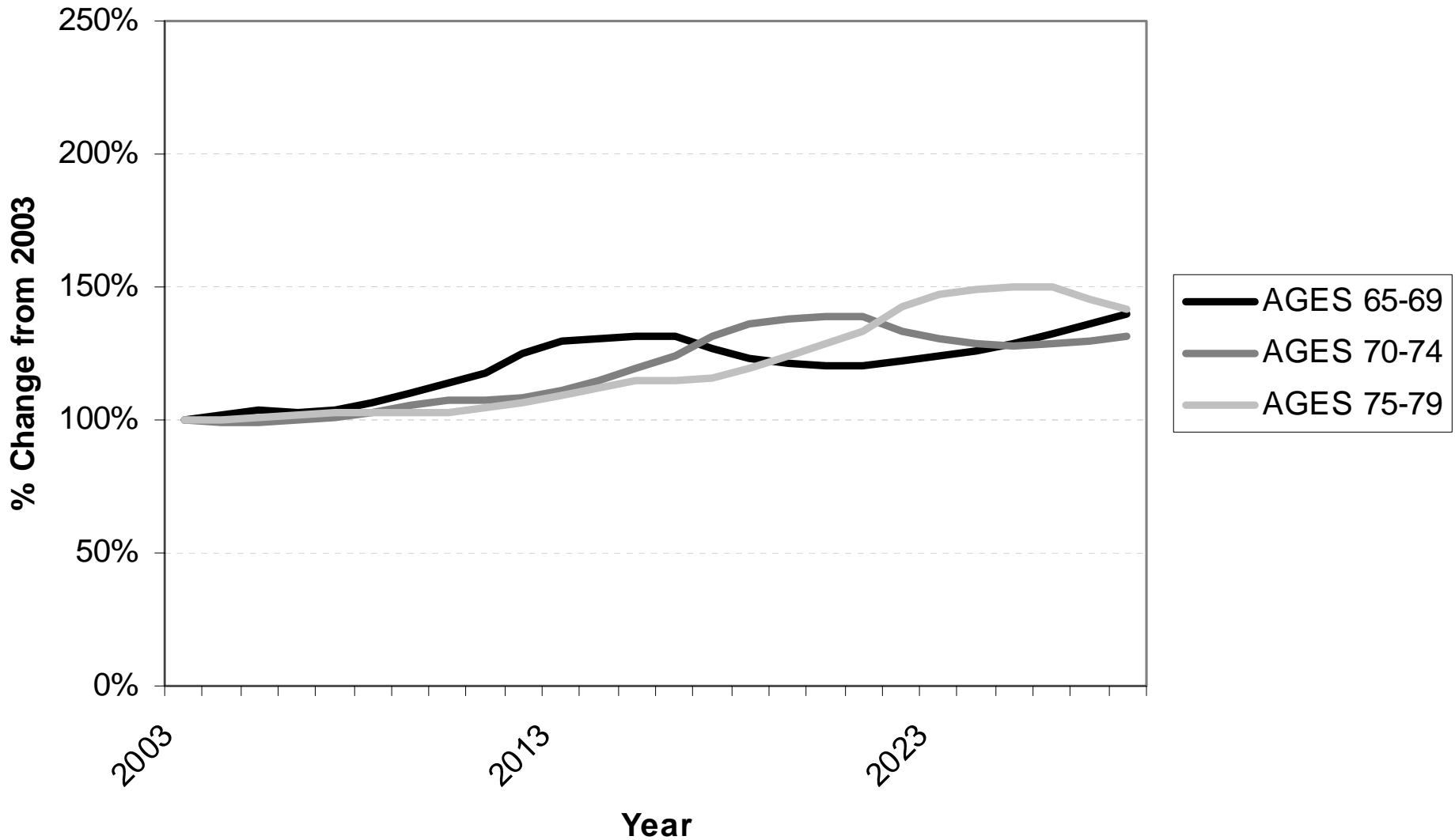
# Demographic Drift

# WMRHA – Old Elderly

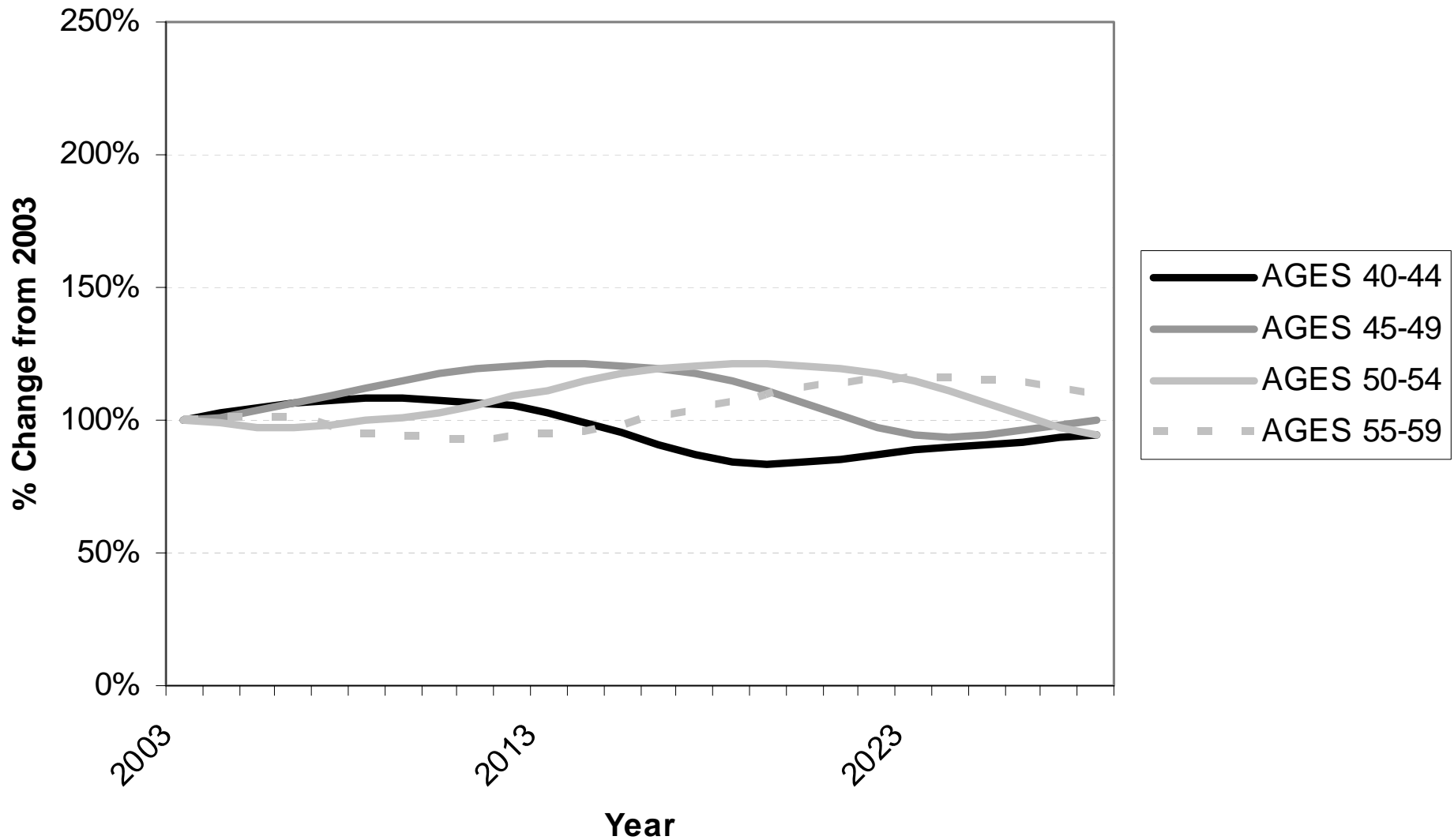




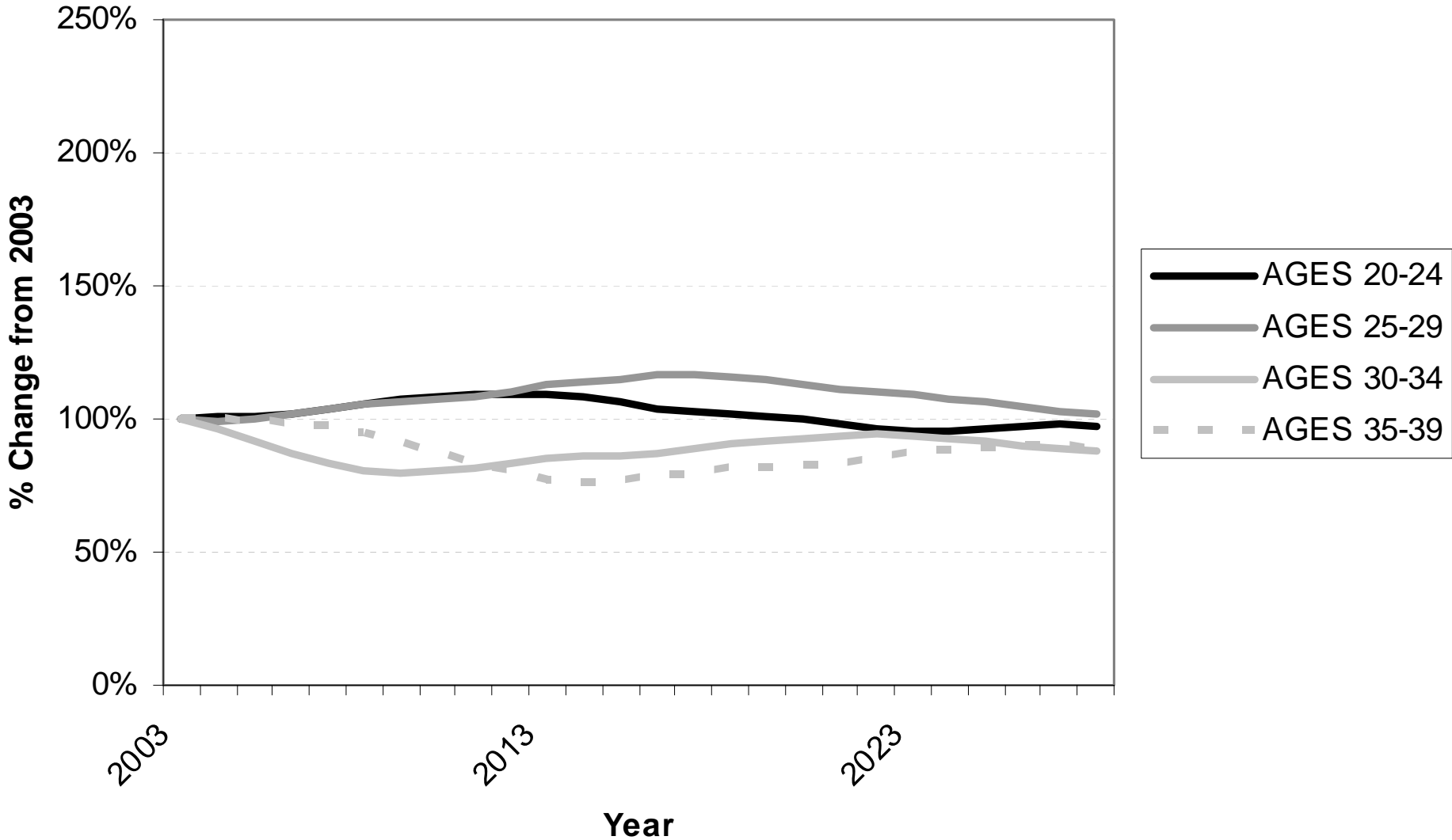
# WMRHA – Young Elderly



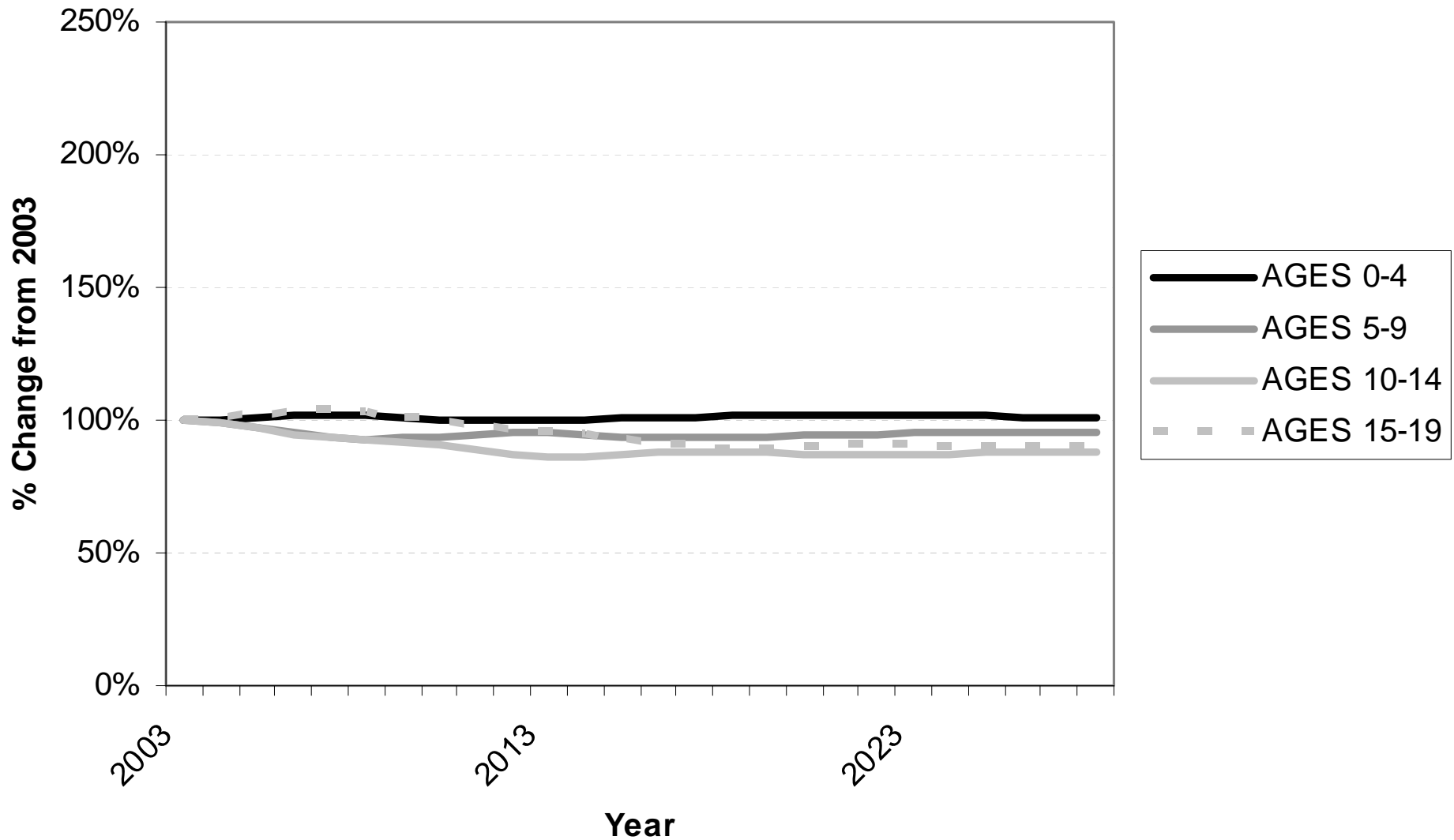
# WMRHA – Middle Age



# WMRHA – Young Adults



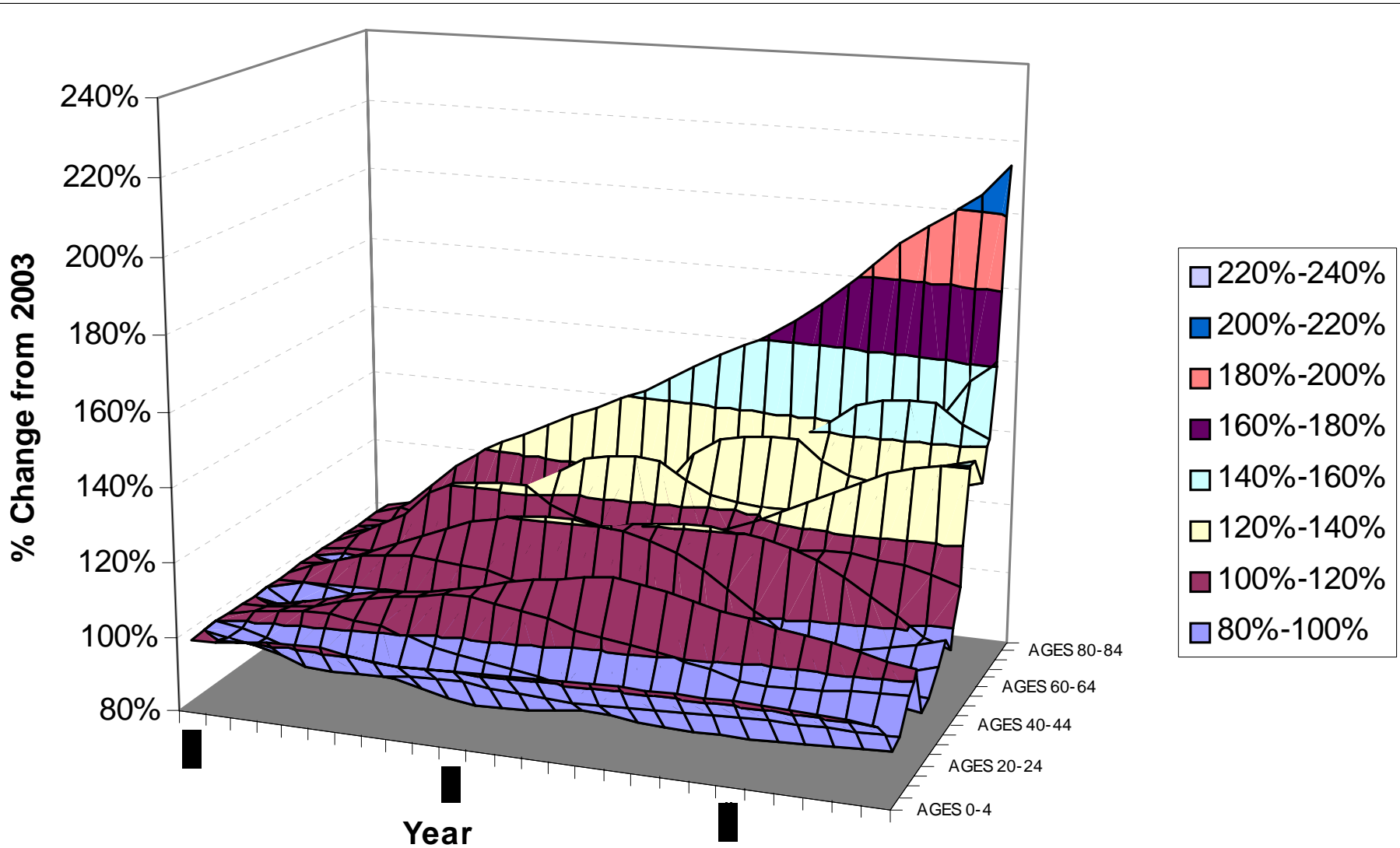
# WMRHA – Children



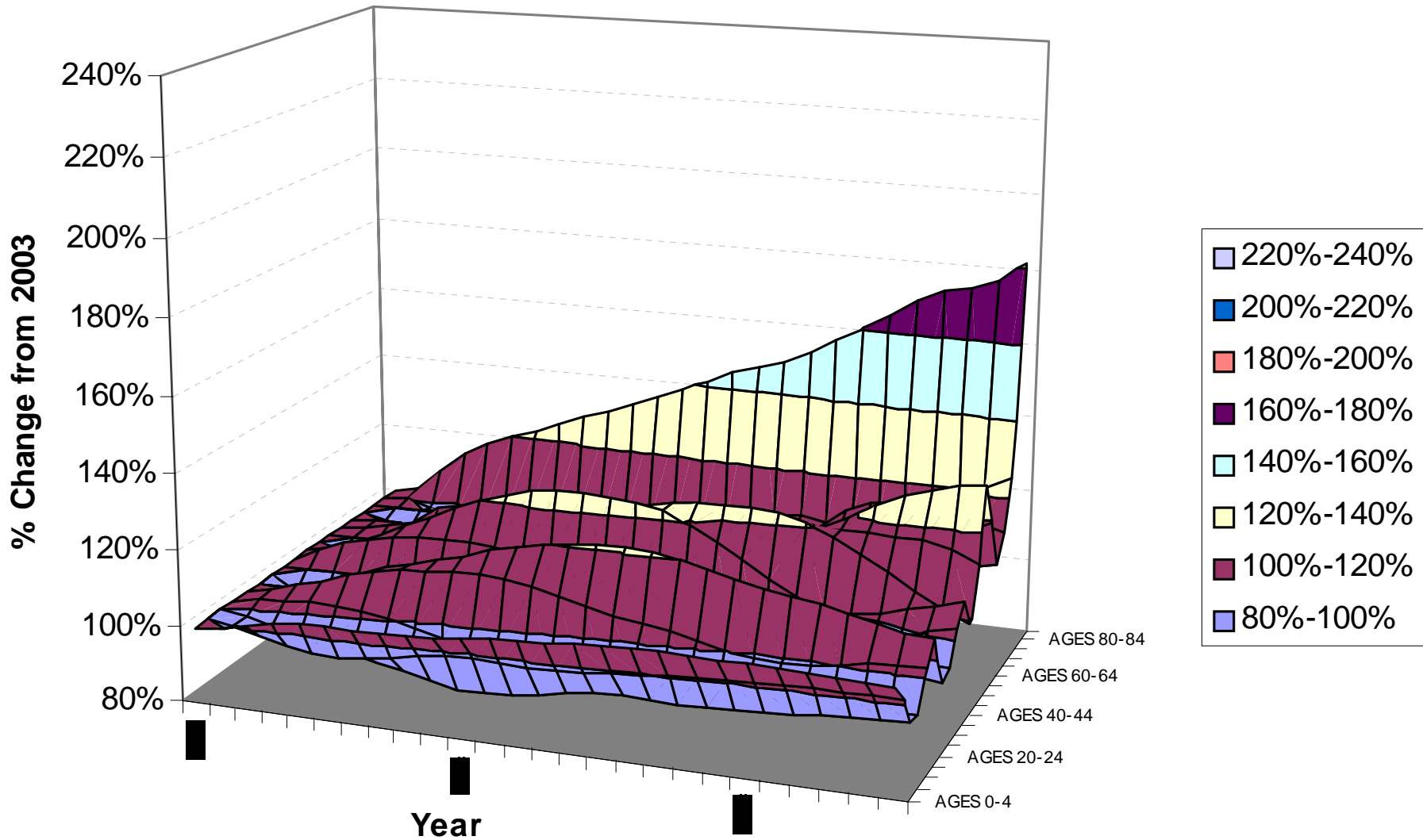
# WMRHA

- SHA Differences
- The same age band data has been amalgamated for each SHA and the WMRHA as a whole
- The graphs have similar axes to enable cross comparison

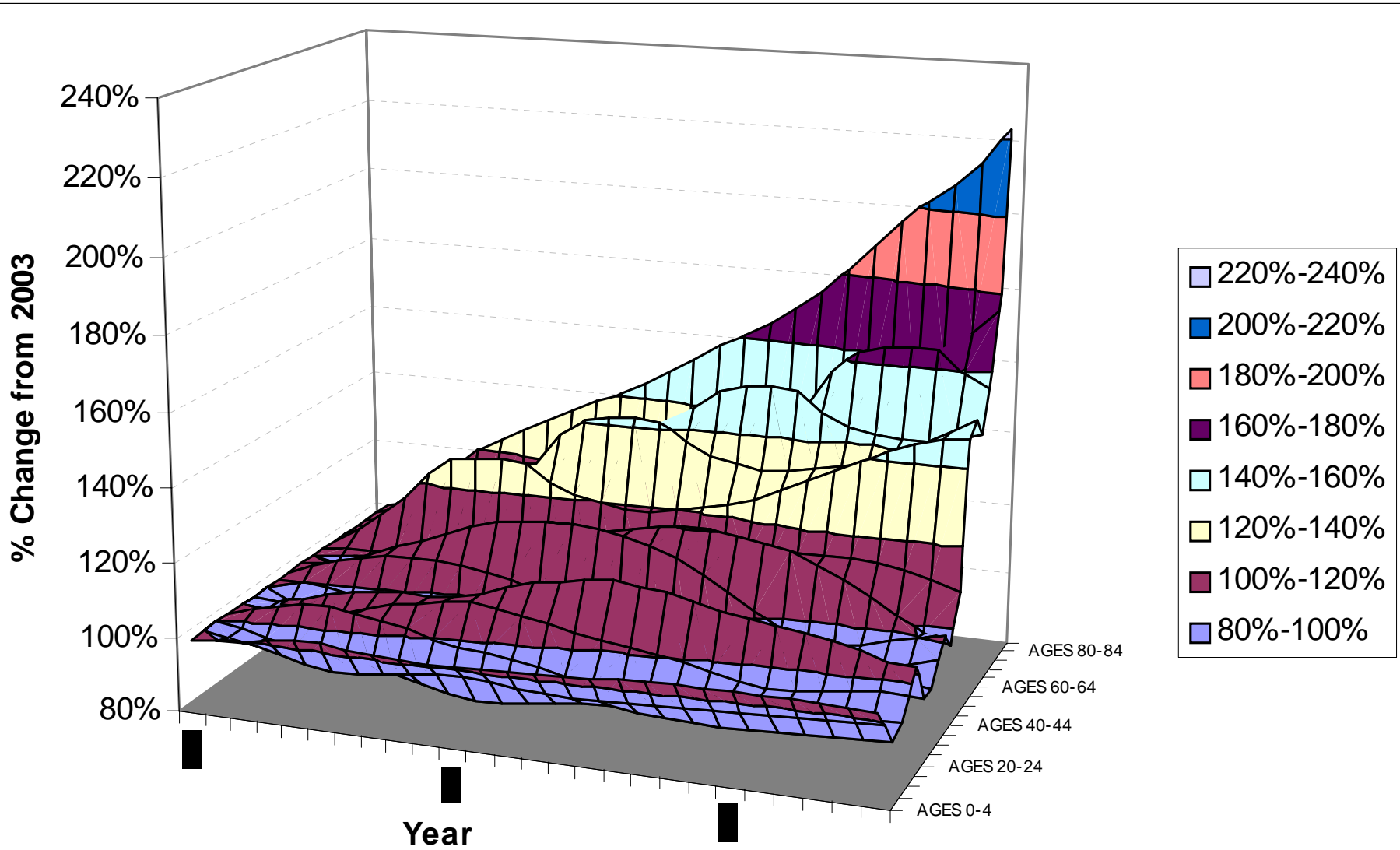
# WMRHA



# BBCHA

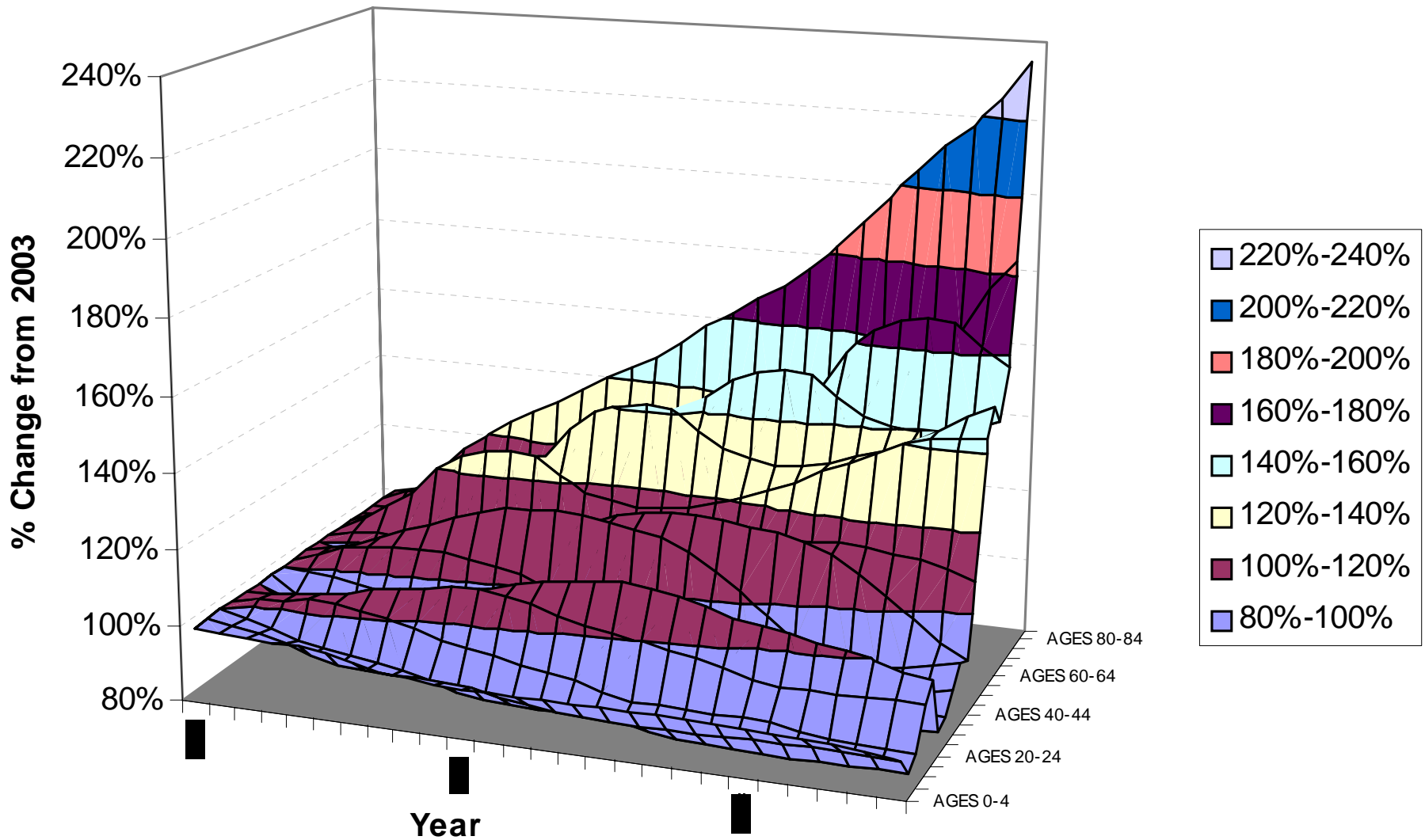


# WMSSHA





# SASSHA



# SHA Specific PbR Inflation due to ageing

Quinary start age-	WMSHA	SASHA	BBCHA	WMRHA
Cardiac Surgery & Primary Cardiac Conditions	£54,635,297	£52,222,379	£36,368,095	£143,225,771
Musculoskeletal System	£50,881,868	£39,768,086	£34,524,705	£125,174,659
Digestive System	£43,317,615	£38,579,827	£27,742,595	£109,640,038
The Nervous System	£36,396,242	£35,617,511	£24,168,322	£96,182,075
Urinary Tract & Male Reproductive System	£28,339,488	£44,580,486	£18,989,747	£91,909,721
Respiratory System	£30,440,366	£30,801,069	£22,351,676	£83,593,111
Vascular System	£11,083,451	£11,568,701	£7,684,426	£30,336,578
Skin, Breast & Burns	£11,673,275	£8,806,185	£9,162,969	£29,642,429
Haematology, Infectious Diseases, Poisoning & Non specific Groupings	£10,690,365	£8,317,802	£6,527,361	£25,535,528
Hepatobiliary System	£8,280,460	£6,874,385	£5,073,844	£20,228,690
Endocrine & Metabolic System	£4,558,705	£4,700,883	£3,831,197	£13,090,785
Mouth, Head, Neck and Ears	£3,909,744	£2,163,991	£2,523,026	£8,596,762
Spinal Surgery & Primary Spinal Conditions	£3,678,095	£2,276,313	£2,377,302	£8,331,709
Female Reproductive System	£4,049,328	£52,632	£3,084,422	£7,186,383
Diseases of Childhood	-£15,287	-£5,337,626	£2,653,635	-£2,699,278
Obstetrics & Neonatal Care	-£2,461,365	-£8,953,129	£30,024	-£11,384,470

Wimbledon  
Funeral Services  
are re-locating

Please telephone

Mr R Bury

0181-947 8099

(24 hour service)

# Go back to your PCTs and...

- Make the case for promoting end of life care at home because
  - Patient Choice
  - White Paper
  - Hospital Model Doesn't work



# Go back to your PCTs and...

- Make the case for promoting end of life care at home because
  - Patient Choice
  - White Paper
  - Hospital Model Doesn't work
  - **Saves money**