

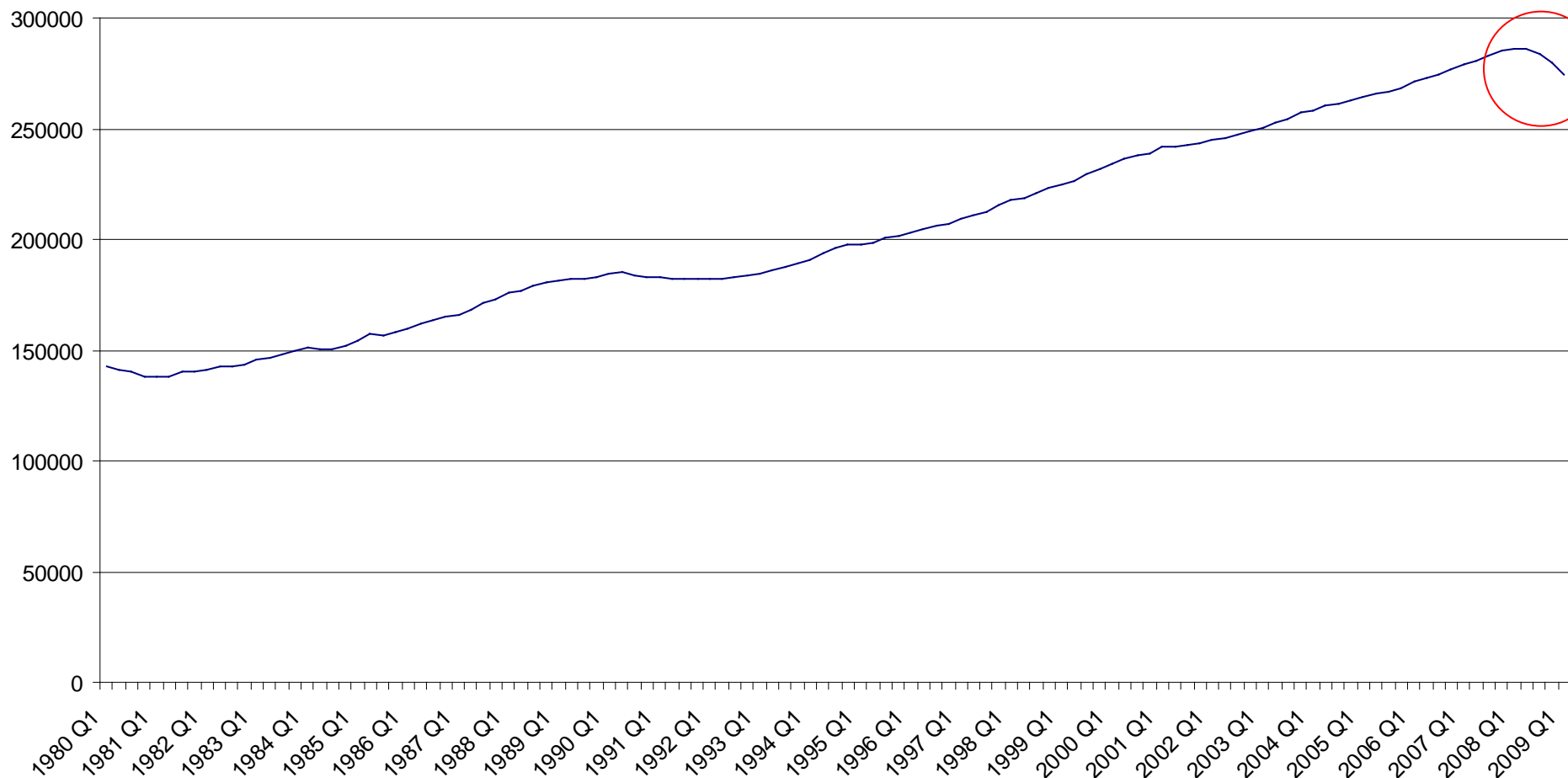
The Recession and Health

Richard Wilson, PhD
Associate Director of Information and
Intelligence
Sandwell PCT

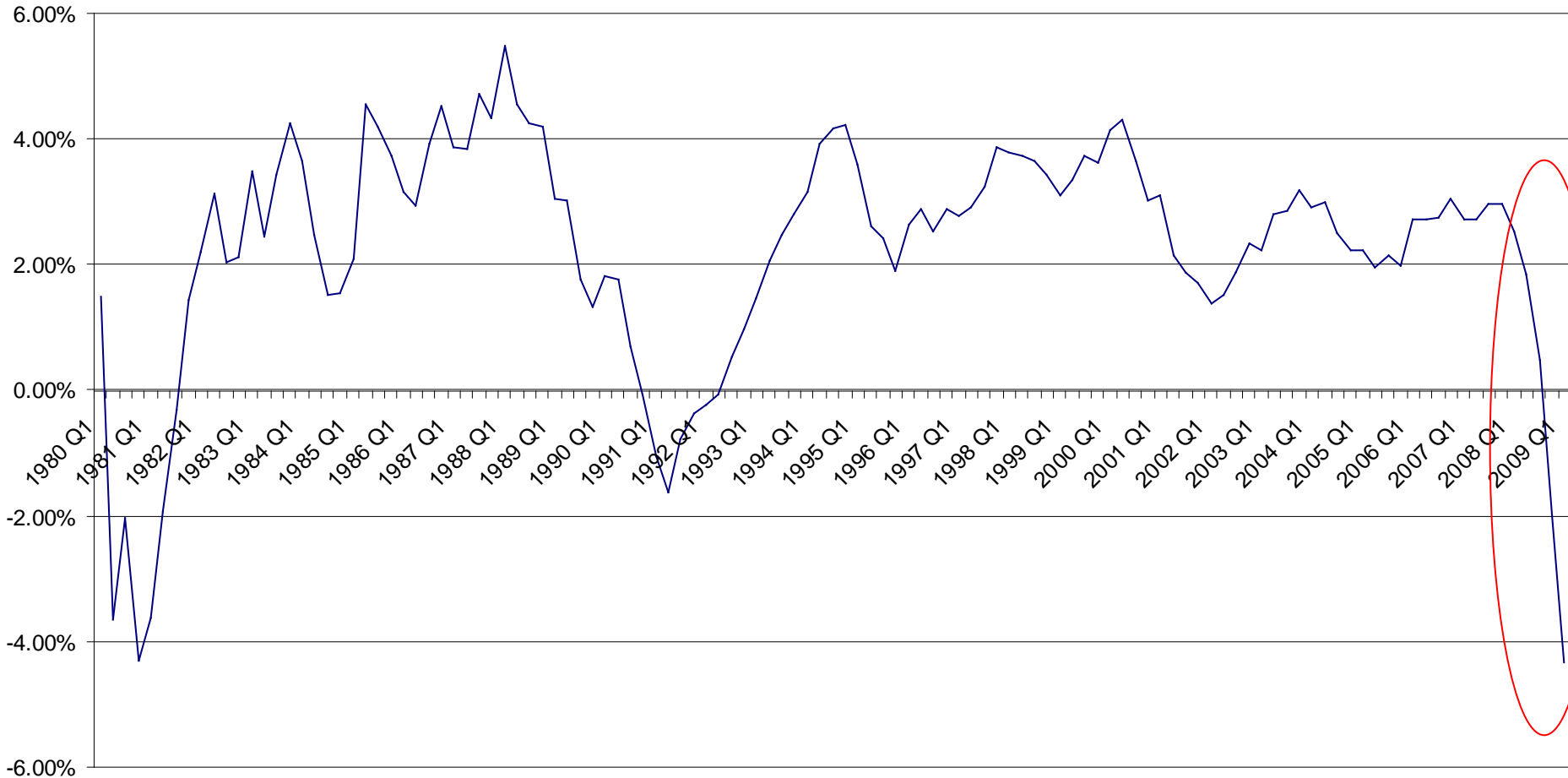
Recession and Health

- Scale of the recession in easy to understand figures
- Explore some of the research on the short and long term impact

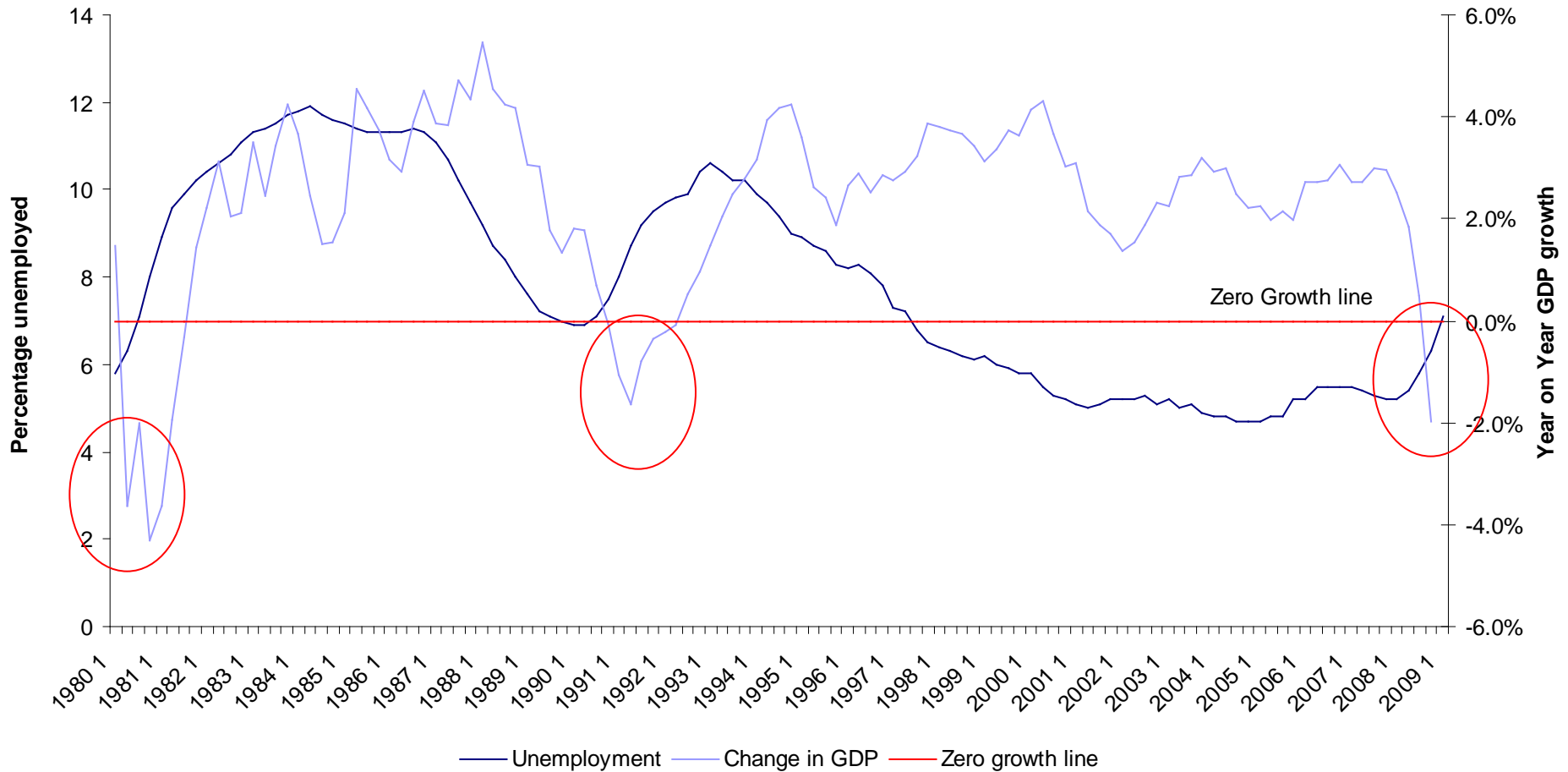
Gross Value Added at basic prices: chained volume measures: Seasonally adjusted, 1980 to 2009 by quarters



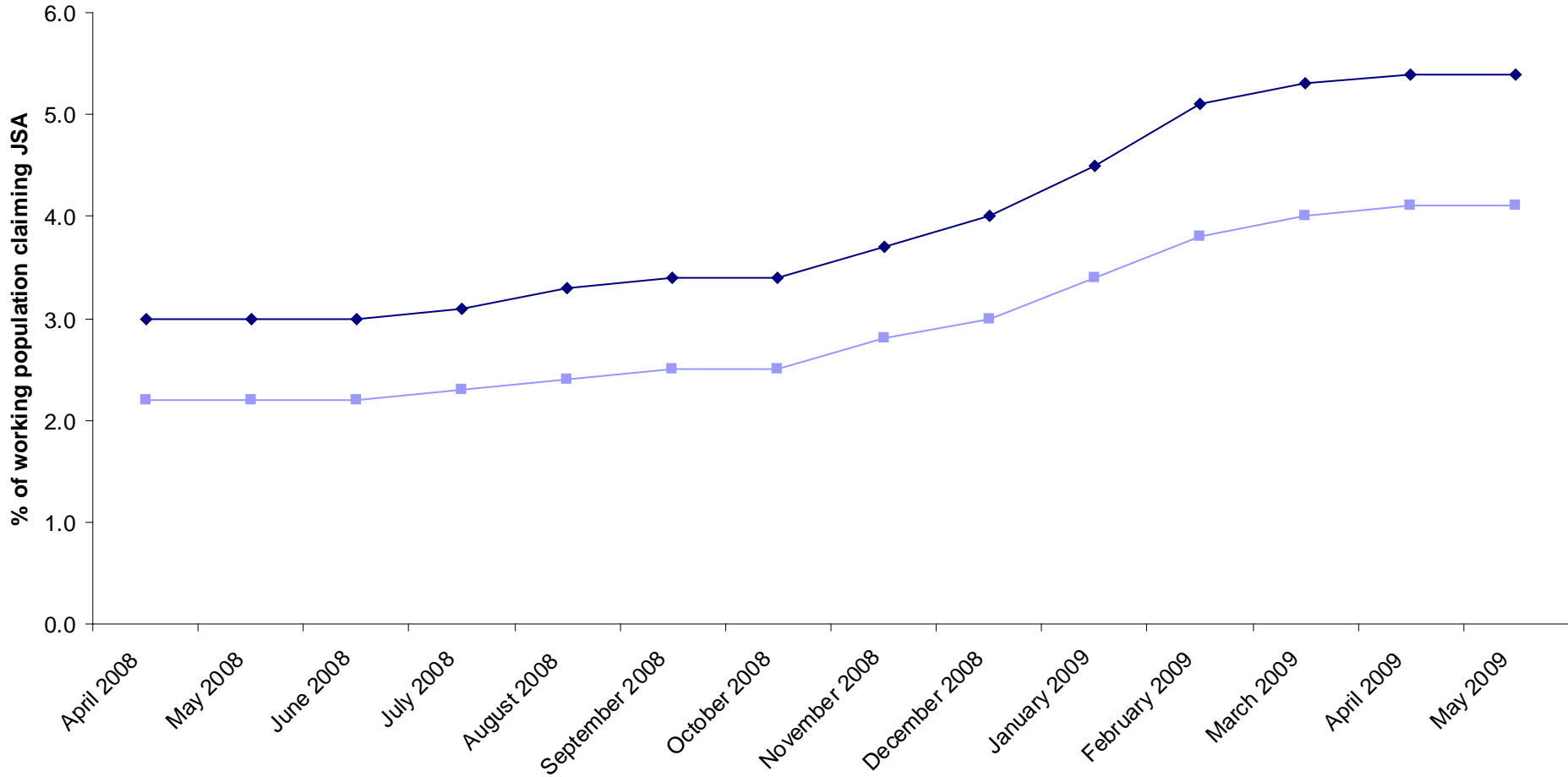
Gross Value Added at basic prices: chained volume measures: Seasonally adjusted, year on year change.



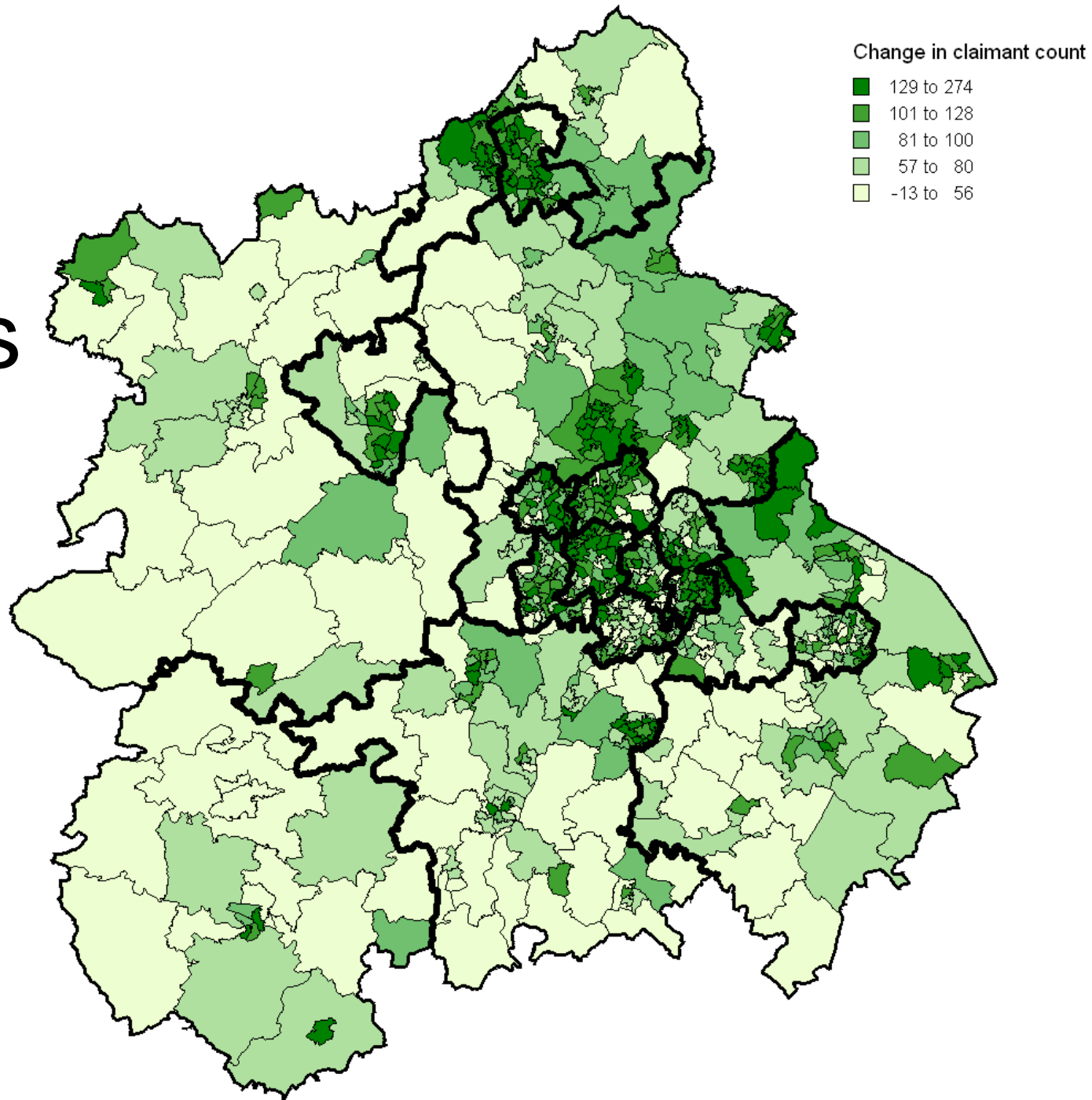
Economic decline and Unemployment



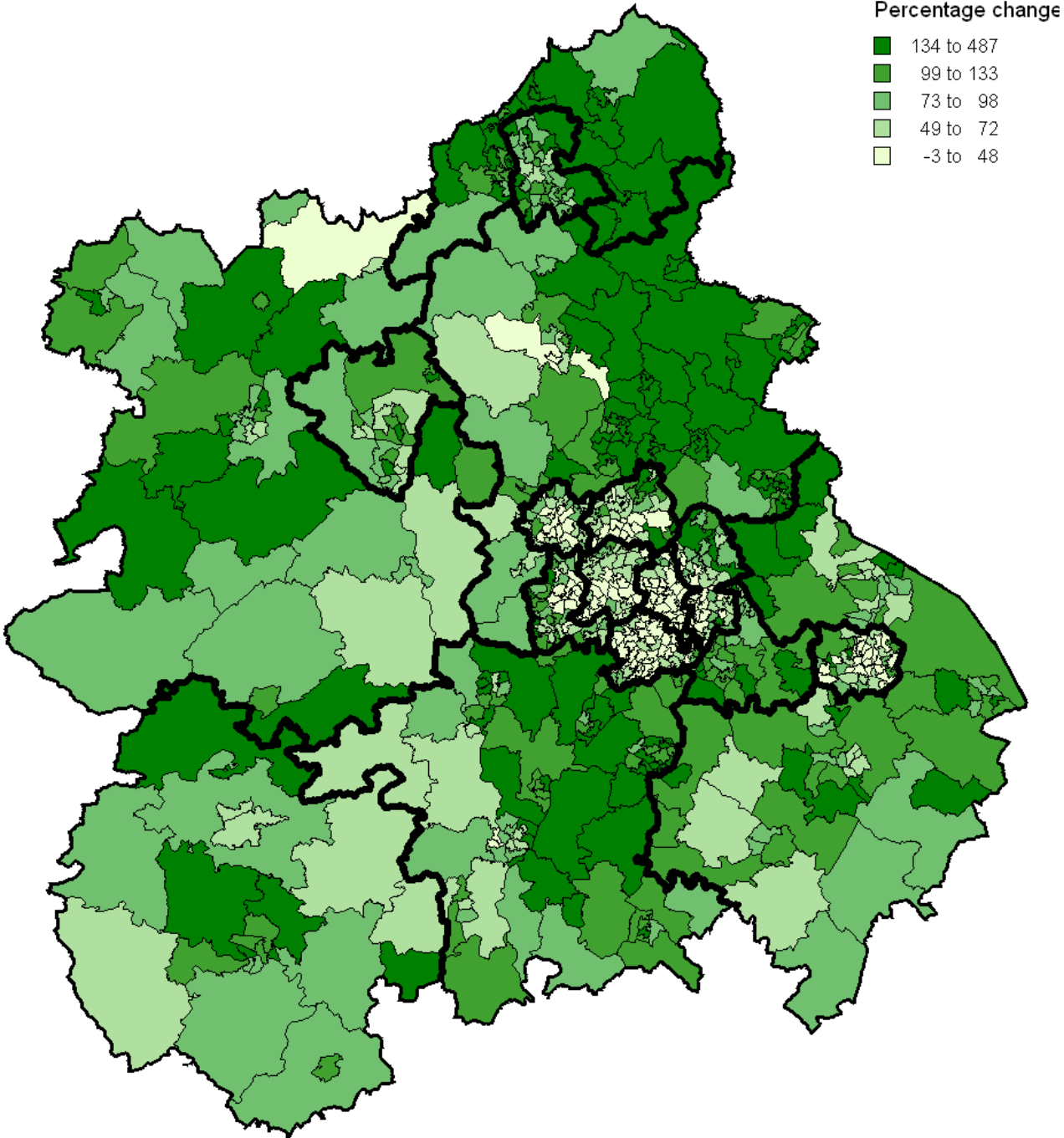
Jobseekers allowance across WM



Increase in claimants



Relative increase





Could the Recession Be Good for Your Health?

By **EBEN HARRELL** Monday, Aug. 31, 2009



Community Supported Agriculture customer Kathy Bison, left, gets help picking corn from 3-year-old Blake Harper at Tangerini's Spring Street Farm in Millis, Mass., on Aug. 20, 2009

Brian Snyder / REUTERS

- Print
- Reprints
- 14 digg it
- Twitter
- LinkedIn
- Email
- Buzz up!
- Facebook
- MORE...

From job security to home foreclosures, there are plenty of things for people to worry about during a recession. But a growing body of research suggests that there's one negative outcome that is actually less likely during an economic downturn: death.

Most Popular »

[Full List »](#)

MOST READ MOST EMAILED

1. Why Exercise Won't Make You Thin
2. Midnight Snacks: More Fattening Than You Feared?
3. Jay Leno Is the Future of TV. Seriously
4. Why Obama Won't Use the M-Word for Honduras' Coup
5. Samurai Mind Training for Modern American Warriors
6. Michael Moore Goes for Broke With *Capitalism*
7. Why Don't We All Drive on the Same Side of the Road?
8. Target Germany: A Second Front in Afghanistan?
9. In Italy, An Offended Berlusconi Goes on the Offensive
10. The Burial Box of Jesus' Brother: Fraud?

Quotes of the Day »

GET & SHARE



"It is recordings from around the world and right from the beginnings of recorded history."

Protective effects?

- Less traffic – fewer people injured
- More time with family – less stress, more supportive
- Less spending on alcohol, cigarettes and reduced excessive food consumption

Negative effects

- Inequalities **kill** – abundant evidence
- Mental stress of redundancy and financial hardship leads to increased depression and suicides

So what is the answer?

- Anti-depressing prescribing on way up, but it had been for years
- Will we ever know?
- No long term longitudinal studies for whole regions
 - Only one cohort study
 - If results are replicated then 3 men per 1,000 people made unemployed will die early in next 5 years